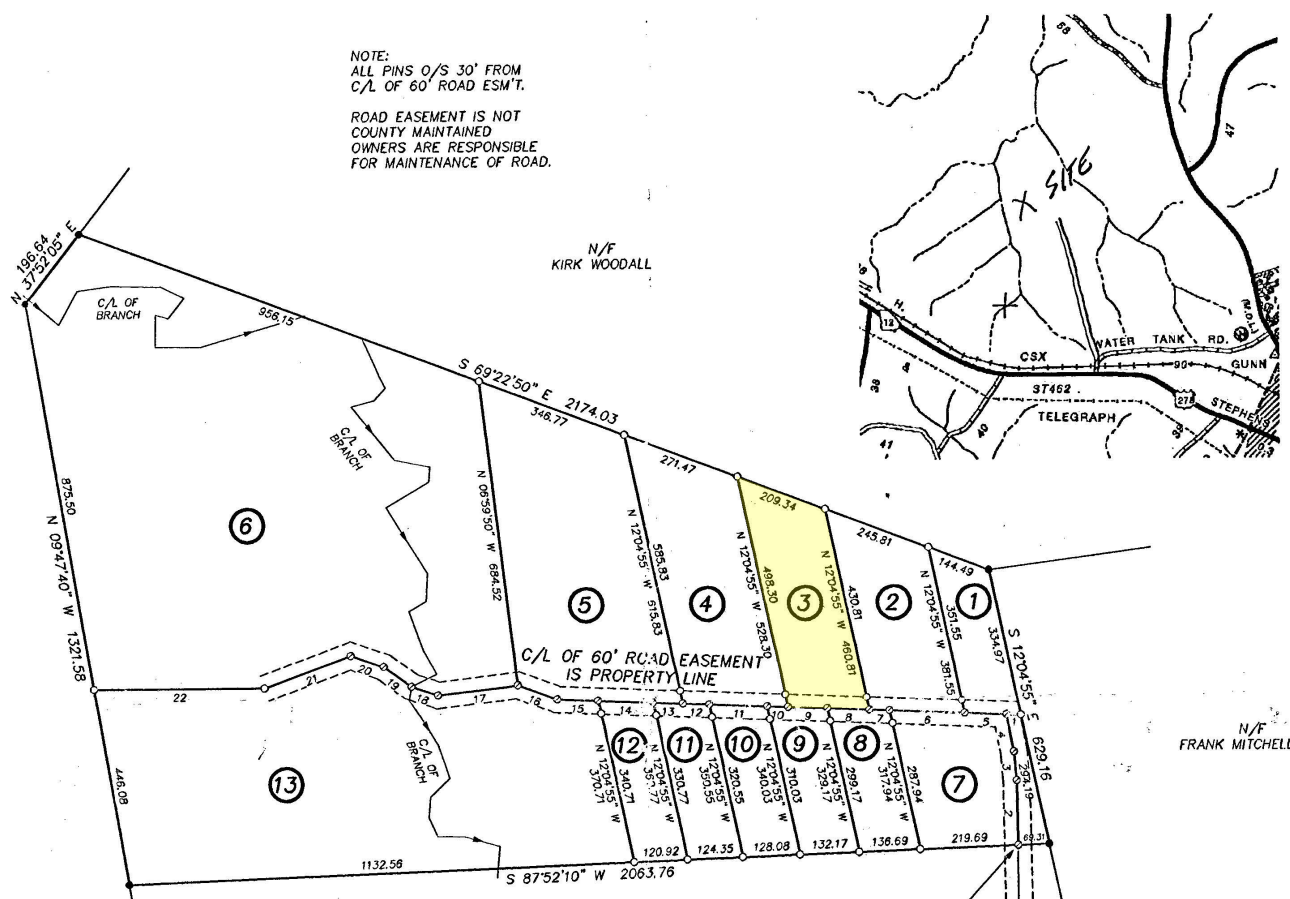


● IFF - IRON PIN FOUND  
 ○ IFS - IRON PIN SET  
 ○ - TRAVERSE POINT  
 □ CM - CONCRETE MONUMENT



NOTE:  
 ALL PINS O/S 30' FROM  
 C/L OF 60' ROAD ESM'T.  
 ROAD EASEMENT IS NOT  
 COUNTY MAINTAINED  
 OWNERS ARE RESPONSIBLE  
 FOR MAINTENANCE OF ROAD.

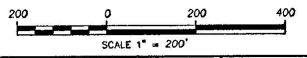


LOT 1	1.000 ACRES
LOT 2	2.000 ACRES
LOT 3	2.000 ACRES
LOT 4	3.000 ACRES
LOT 5	5.000 ACRES
LOT 6	19.000 ACRES
LOT 7	2.000 ACRES
LOT 8	1.000 ACRES
LOT 9	1.000 ACRES
LOT 10	1.000 ACRES
LOT 11	1.000 ACRES
LOT 12	1.000 ACRES
LOT 13	11.012 ACRES

LINE	BEARING	DISTANCE
1	N 87°34'05" W	32.03
2	N 00°59'40" W	143.73
3	N 05°23'35" W	64.21
4	N 10°39'05" W	85.45
5	N 87°34'05" W	93.57
6	N 87°34'05" W	168.43
7	N 87°34'05" W	45.23
8	N 87°34'05" W	93.83
9	N 87°34'05" W	88.13
10	N 87°34'05" W	46.35
11	N 87°34'05" W	130.31
12	N 87°34'05" W	59.31
13	N 87°34'05" W	67.21
14	N 87°34'05" W	123.03
15	N 87°34'05" W	91.56
16	N 69°35'50" W	94.45
17	S 83°04'55" W	179.37
18	N 71°15'40" W	63.05
19	N 53°55'05" W	77.53
20	N 71°03'25" W	78.50
21	S 69°29'35" W	208.03
22	N 89°55'00" W	382.41

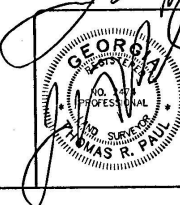
N/F DORRELL SMITH

1.0 MILE ALONG EXISTING ACCESS ROAD TO C/L OF U.S. HWY. 278



GEORGIA TALLAFERRO COUNTY  
 CLERK SUPERIOR COURT  
 FILED *March 13, 2008*  
 RECORDED *2010 AM*  
*Paul & Evans*  
 DEPUTY CLERK

I HEREBY CERTIFY THAT THIS PLAN IS TRUE AND CORRECT REPRESENTATION OF THE LAND PLANNED AND SURVEYED IN ACCORDANCE WITH THE STATUTES OF THE STATE OF GEORGIA.



SURVEY FOR  
**CERES MAXIMIN JACQUES**

DATE: 6/07	COUNTY: TALLAFERRO	STATE: GEORGIA	DATE: 07-13-08
THEODOLITE: TOPGUN	DIST. LEAD: 17/30,000'	CLOSURE: ANGLE CLOSURE 2'/ANGLE	ADJUSTMENT: NONE

SURVEYED BY:  
**PAUL & EVANS**  
 LAND SURVEYING, INC.  
 P.O. BOX 262  
 LEXINGTON, GA. 30648  
 708-743-5208

