

SURVEYED FOR

PREMIER CONSTRUCTION SERVICES, INC.

IN LAND LOT 167, 4TH. DISTRICT, 3RD. SECTION,
BARTOW COUNTY, GEORGIA

DATE 1-28-2000 SCALE 1" = 40'

Book 80, Page 5977
 GEORGIA BARTOW COUNTY
 CLERK'S OFFICE SUPERVISOR COURT
 No. 23
 Received \$150.00
 Paid \$0.00
 Balance \$150.00
 Date 1/28/00
 JHC



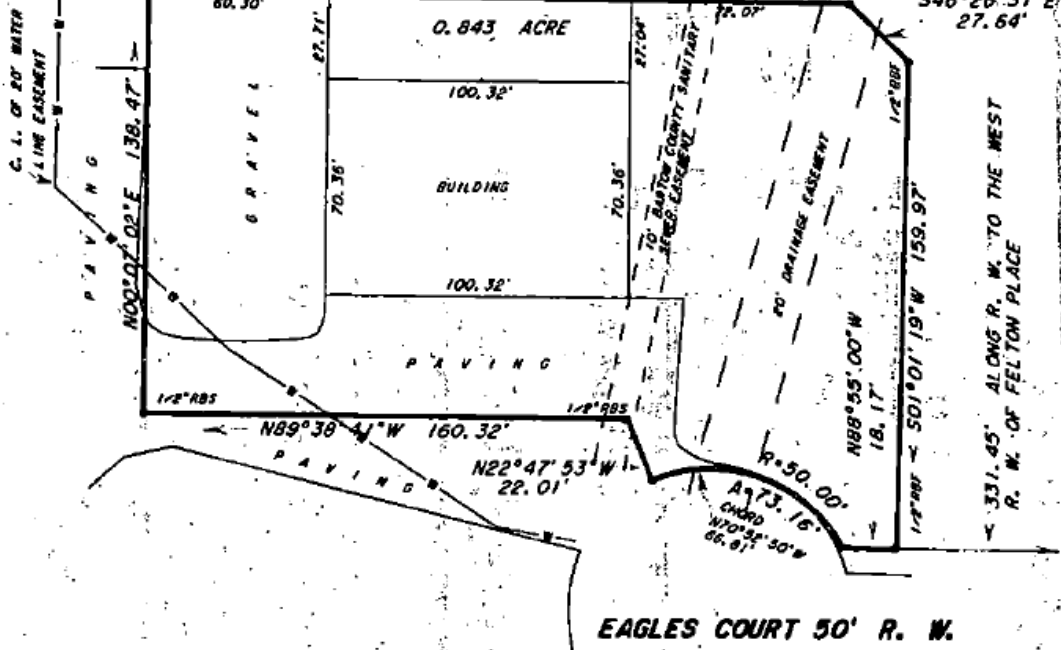
N89°15'30"W 281.15'
TO 3/8" RBS

1/2" RBS

S89°15'50"E 232.69'

1/2" RBS

S46°26'31"E
27.64'



FIELD DATA:
 CLOSURE: 1" IN 24,300'
 EQUIPMENT: TOPCON GTS-303
 ANGULAR ERROR: 03" PER ANGLE POINT
 BEARINGS ARE MAG. CAL. FROM ANGLES
 TURNED.
 ADJUSTED USING LEAST SQUARES
 FLAT CLOSURE 1" IN 100,000'

FEMA FLOOD HAZARD MAP # 13015C0087 F
 DATED SEPTEMBER 29, 1989, SHOWS THIS
 PROPERTY OUT OF FLOOD ZONE.

KNIGHT & KNIGHT LAND SURVEYORS
 1172 HOWLAND SPRINGS ROAD, SE
 CARTERSVILLE, GEORGIA 30111
 TELEPHONE (770) 358-7975
 OR (770) 358-6684

JOHN R. KNIGHT
 REGISTERED
 LAND SURVEYOR
 No. 71812
 GEORGIA

