

GOLDEN SOUTH

FINAL PLAT FOR

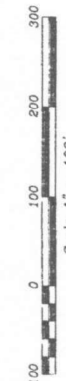
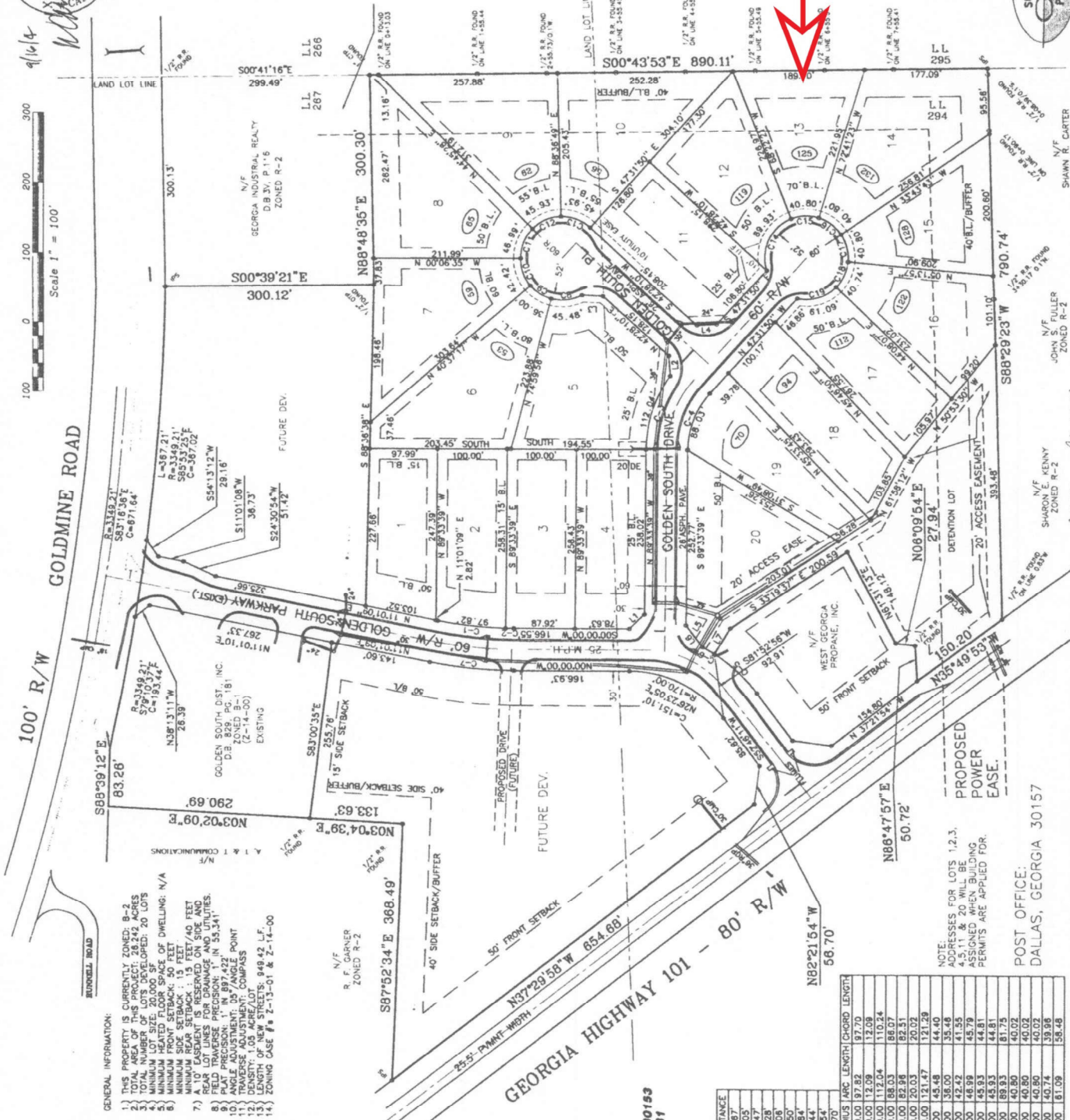
SHEET TWO OF TWO

LOCATED IN LAND LOTS 267 & 294
19TH DISTRICT, 3RD SECTION
PAULDING COUNTY, GEORGIA



CARLTON HAKSTRAM & ASSOCIATES
REGISTERED LAND SURVEYORS
704 MARITTA HIGHWAY - DALLAS, GEORGIA 30157
PHONE (770) 443-2200 - FAX (770) 443-2300

PROJECT NO. 99-055
DRAWN BY: C.D.C.
DATE: SEPT. 3, 2004
APPROVED BY: W.C.R.



GOLDMINE ROAD

100' R/W

83.26'

290.69'

133.63'

50.72'

GENERAL INFORMATION:
1) THIS PROPERTY IS CURRENTLY ZONED R-2.
2) TOTAL AREA OF THIS PROJECT: 20.24 ACRES.
3) TOTAL NUMBER OF LOTS DEVELOPED: 20 LOTS.
4) MINIMUM LOT SIZE: 20,000 SF OF DWELLING; N/A
5) MINIMUM FRONT SETBACK: 30 FEET
6) MINIMUM SIDE SETBACK: 50 FEET
7) MINIMUM REAR SETBACK: 15 FEET
8) REAR LOT LINES FOR DRAINAGE AND UTILITIES.
9) FIELD TRVERSE PRECISION: 1" IN 55,341'
10) ANGLE ADJUSTMENT: 20" ANGLE POINT
11) TRANSVERSE ADJUSTMENT: COMPASS
12) DENSITY: 1.03 ARE/LOTS; 949.42 LF
13) ZONING CASE # 2-13-01 & 2-14-00
14) ZONING CASE # 2-13-01 & 2-14-00

| NUMBER | AREA |
|--------|----------|
| 1 | 23737 SF |
| 2 | 25433 SF |
| 3 | 25433 SF |
| 4 | 25625 SF |
| 5 | 37037 SF |
| 6 | 31873 SF |
| 7 | 30683 SF |
| 8 | 32843 SF |
| 9 | 32843 SF |
| 10 | 32101 SF |
| 11 | 28729 SF |
| 12 | 28112 SF |
| 13 | 24207 SF |
| 14 | 35320 SF |
| 15 | 25659 SF |
| 16 | 25705 SF |
| 17 | 27907 SF |
| 18 | 27907 SF |
| 19 | 24680 SF |
| 20 | 30256 SF |

NOTE: ADDRESSES FOR LOTS 1,2,3, 4,5,14 & 20 WILL BE 4515 GOLDEN SOUTH PARKWAY (DIST.) PERMITS ARE APPLIED FOR.

POST OFFICE: DALLAS, GEORGIA 30157

NOTE: ALL CORNERS ARE 1/2" RE-ROD SET UNLESS OTHERWISE NOTED.

24 HOUR CONTACT:
JERRY BULLOCK
P.O. BOX 352
ROCKMART, GEORGIA 30153
PHONE 770-443-6131

| NUMBER | DIRECTION | DISTANCE |
|--------|---------------|----------|
| L-1 | S 43°28'35" E | 28.87' |
| L-2 | N 82°51'51" E | 29.05' |
| L-3 | N 02°21'23" E | 50.37' |
| L-4 | N 02°31'50" W | 28.28' |
| L-5 | N 57°53'44" W | 48.06' |
| L-6 | N 52°21'10" E | 38.50' |
| L-7 | N 57°53'44" W | 42.84' |
| L-8 | N 45°18'07" W | 58.44' |
| L-9 | N 44°43'31" W | 53.50' |
| L-10 | N 44°43'31" W | 53.50' |
| C-1 | N 08°08'09" E | 570.00' |
| C-2 | N 02°54'43" E | 570.00' |
| C-3 | N 71°43'43" W | 180.00' |
| C-4 | N 69°32'44" W | 120.00' |
| C-5 | N 42°28'13" E | 230.00' |
| C-6 | N 29°39'39" E | 230.00' |
| C-7 | S 05°29'43" W | 630.00' |
| C-8 | S 05°42'31" W | 600.00' |
| C-9 | S 05°42'31" W | 600.00' |
| C-10 | N 87°40'30" W | 600.00' |
| C-11 | N 23°18'52" E | 600.00' |
| C-12 | N 20°32'30" E | 600.00' |
| C-13 | S 02°10'13" E | 600.00' |
| C-14 | S 02°10'13" E | 600.00' |
| C-15 | S 28°47'27" W | 600.00' |
| C-16 | S 28°47'27" W | 600.00' |
| C-17 | S 28°47'27" W | 600.00' |
| C-18 | S 28°47'27" W | 600.00' |
| C-19 | N 16°41'51" W | 160.00' |

ARC LENGTH (CHORD LENGTH)

112.04
88.07
82.51
20.02
121.29
44.40
41.55
45.79
44.81
81.75
40.02
40.02
40.02
39.98
56.48

112.04
88.07
82.51
20.02
121.29
44.40
41.55
45.79
44.81
81.75
40.02
40.02
40.02
39.98
56.48

112.04
88.07
82.51
20.02
121.29
44.40
41.55
45.79
44.81
81.75
40.02
40.02
40.02
39.98
56.48

112.04
88.07
82.51
20.02
121.29
44.40
41.55
45.79
44.81
81.75
40.02
40.02
40.02
39.98
56.48

112.04
88.07
82.51
20.02
121.29
44.40
41.55
45.79
44.81
81.75
40.02
40.02
40.02
39.98
56.48

112.04
88.07
82.51
20.02
121.29
44.40
41.55
45.79
44.81
81.75
40.02
40.02
40.02
39.98
56.48

112.04
88.07
82.51
20.02
121.29
44.40
41.55
45.79
44.81
81.75
40.02
40.02
40.02
39.98
56.48

112.04
88.07
82.51
20.02
121.29
44.40
41.55
45.79
44.81
81.75
40.02
40.02
40.02
39.98
56.48

112.04
88.07
82.51
20.02
121.29
44.40
41.55
45.79
44.81
81.75
40.02
40.02
40.02
39.98
56.48

112.04
88.07
82.51
20.02
121.29
44.40
41.55
45.79
44.81
81.75
40.02
40.02
40.02
39.98
56.48

112.04
88.07
82.51
20.02
121.29
44.40
41.55
45.79
44.81
81.75
40.02
40.02
40.02
39.98
56.48

112.04
88.07
82.51
20.02
121.29
44.40
41.55
45.79
44.81
81.75
40.02
40.02
40.02
39.98
56.48

112.04
88.07
82.51
20.02
121.29
44.40
41.55
45.79
44.81
81.75
40.02
40.02
40.02
39.98
56.48

112.04
88.07
82.51
20.02
121.29
44.40
41.55
45.79
44.81
81.75
40.02
40.02
40.02
39.98
56.48

112.04
88.07
82.51
20.02
121.29
44.40
41.55
45.79
44.81
81.75
40.02
40.02
40.02
39.98
56.48

112.04
88.07
82.51
20.02
121.29
44.40
41.55
45.79
44.81
81.75
40.02
40.02
40.02
39.98
56.48

112.04
88.07
82.51
20.02
121.29
44.40
41.55
45.79
44.81
81.75
40.02
40.02
40.02
39.98
56.48

112.04
88.07
82.51
20.02
121.29
44.40
41.55
45.79
44.81
81.75
40.02
40.02
40.02
39.98
56.48

112.04
88.07
82.51
20.02
121.29
44.40
41.55
45.79
44.81
81.75
40.02
40.02
40.02
39.98
56.48

112.04
88.07
82.51
20.02
121.29
44.40
41.55
45.79
44.81
81.75
40.02
40.02
40.02
39.98
56.48

112.04
88.07
82.51
20.02
121.29
44.40
41.55
45.79
44.81
81.75
40.02
40.02
40.02
39.98
56.48

112.04
88.07
82.51
20.02
121.29
44.40
41.55
45.79
44.81
81.75
40.02
40.02
40.02
39.98
56.48

112.04
88.07
82.51
20.02
121.29
44.40
41.55
45.79
44.81
81.75
40.02
40.02
40.02
39.98
56.48

112.04
88.07
82.51
20.02
121.29
44.40
41.55
45.79
44.81
81.75
40.02
40.02
40.02
39.98
56.48

112.04
88.07
82.51
20.02
121.29
44.40
41.55
45.79
44.81
81.75
40.02
40.02
40.02
39.98
56.48

112.04
88.07
82.51
20.02
121.29
44.40
41.55
45.79
44.81
81.75
40.02
40.02
40.02
39.98
56.48

112.04
88.07
82.51
20.02
121.29
44.40
41.55
45.79
44.81
81.75
40.02
40.02
40.02
39.98
56.48

112.04
88.07
82.51
20.02
121.29
44.40
41.55
45.79
44.81
81.75
40.02
40.02
40.02
39.98
56.48