

20.785 Ac Cliff-Nelson Road

Proposed Divisions are approximate

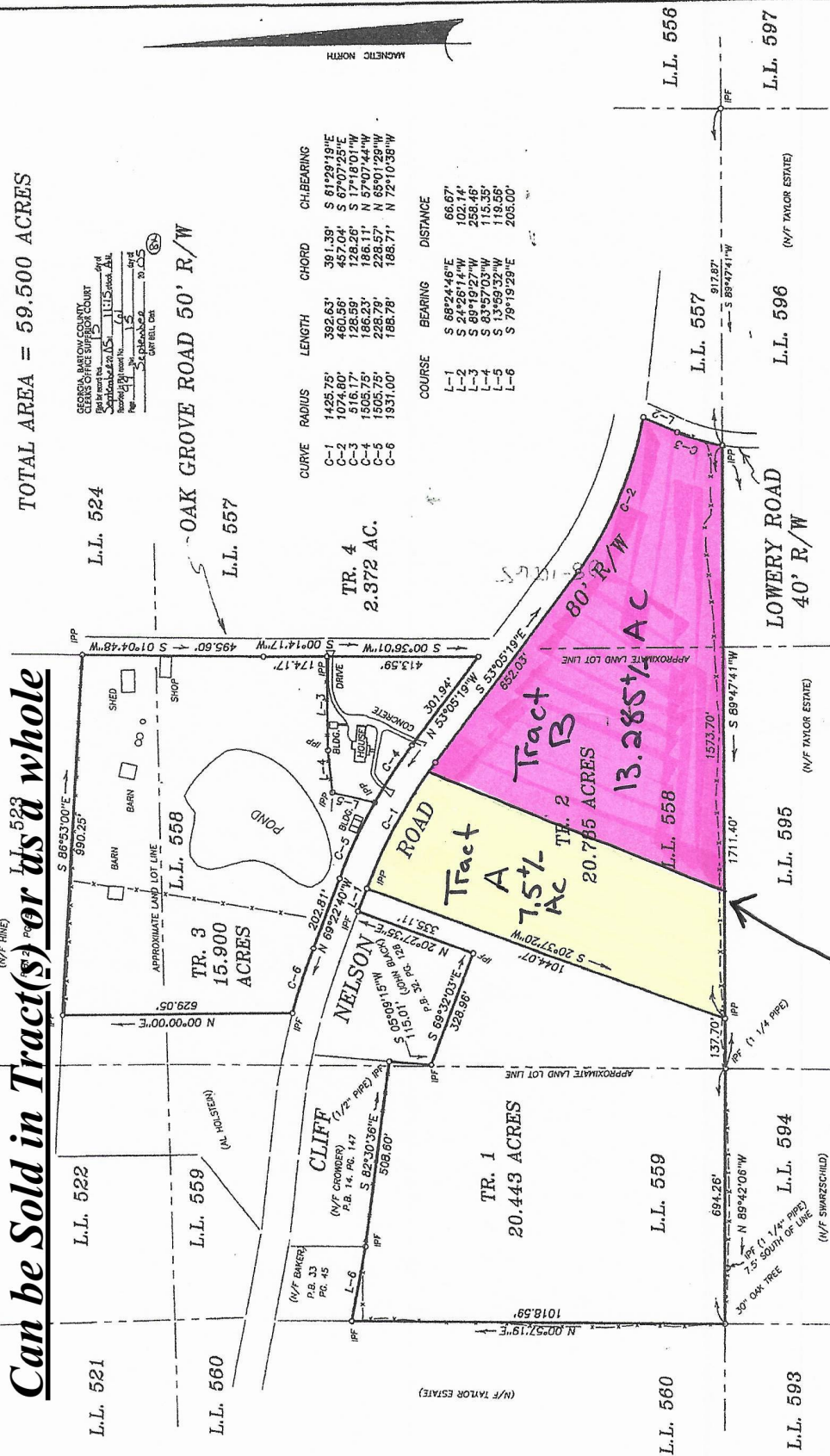
Tract A = 7.5 +/- Ac

Tract B = 13.285 +/- Ac

Can be Sold in Tract(s) or as a whole

SURVEY FOR
ESTATE OF KATYE H. BLACK
 PROPERTY IN LAND LOTS 523, 557, 558 & 559
 17th DISTRICT, 3rd SECTION
 BARTOW COUNTY, GEORGIA

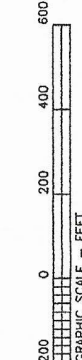
TOTAL AREA = 59.500 ACRES



CURVE	RADIUS	LENGTH	CHORD	CH-BEARING
C-1	1425.75'	392.63'	391.39'	S 81°29'19"E
C-2	1074.80'	460.96'	457.04'	S 67°07'25"E
C-3	1505.75'	188.23'	186.51'	N 57°07'44"W
C-4	1505.75'	228.57'	228.57'	N 65°01'29"W
C-5	1505.75'	188.78'	188.71'	N 72°10'35"W
C-6	1931.00'	188.78'	188.71'	N 72°10'35"W

COURSE	BEARINGS	DISTANCE
L-1	S 69°24'46"E	66.87'
L-2	S 24°26'14"W	102.14'
L-3	S 69°19'27"W	258.46'
L-4	S 83°57'03"W	115.35'
L-5	S 13°59'32"W	119.55'
L-6	S 79°19'29"E	205.00'

8/6/05
 ORGANIZATION
 CLAUDE E. TAYLOR
 HEAD, HATCH & ASSOCIATES
 LAND SURVEYORS
 P.O. BOX 501
 ROCKMART, GEORGIA 30153
 770-884-0724
 FILE: 1060-1



SCALE 1" = 200' AUGUST 06, 2005

Property line is approximate.

- NOTES
1. I.P.P. INDICATES IRON PIN PLACED (1/2" RE-BAR)
 2. I.P.P. INDICATES IRON PIN FOUND (1/2" RE-BAR UNLESS OTHERWISE NOTED)
 3. TRAVERSE PRECISION: 1" IN 19,000' (UNADJUSTED)
 4. ANGULAR ERROR: 03" / SET-UP
 5. EQUIPMENT USED: TOPCON GTS-2110
 6. TRAVERSE ADJUSTMENT: LEAST SQUARES
 7. THIS PLAN HAS BEEN CALCULATED FOR CLOSURE AND HAS BEEN FOUND TO BE ACCURATE WITHIN 1" IN 200,000'

Exhibit "A"