

SURVEY FOR:
HENDERSON PROPERTIES

PROPERTY LOCATED IN:
 LAND LOTS 21 & 22,
 4th DISTRICT, 3rd SECTION,
 IN THE CITY OF CARTERSVILLE,
 BARTOW COUNTY, GEORGIA

GEORGIA, BARTOW COUNTY
 CLERK'S OFFICE SUPERIOR COURT

Filed for record this 20 day of
Jan 2006 at 10:17 o'clock A.M.
 Recorded in Plat record No. 59
 Page 249 this 20 day of
Jan 2006
 GARY BELL, Clerk

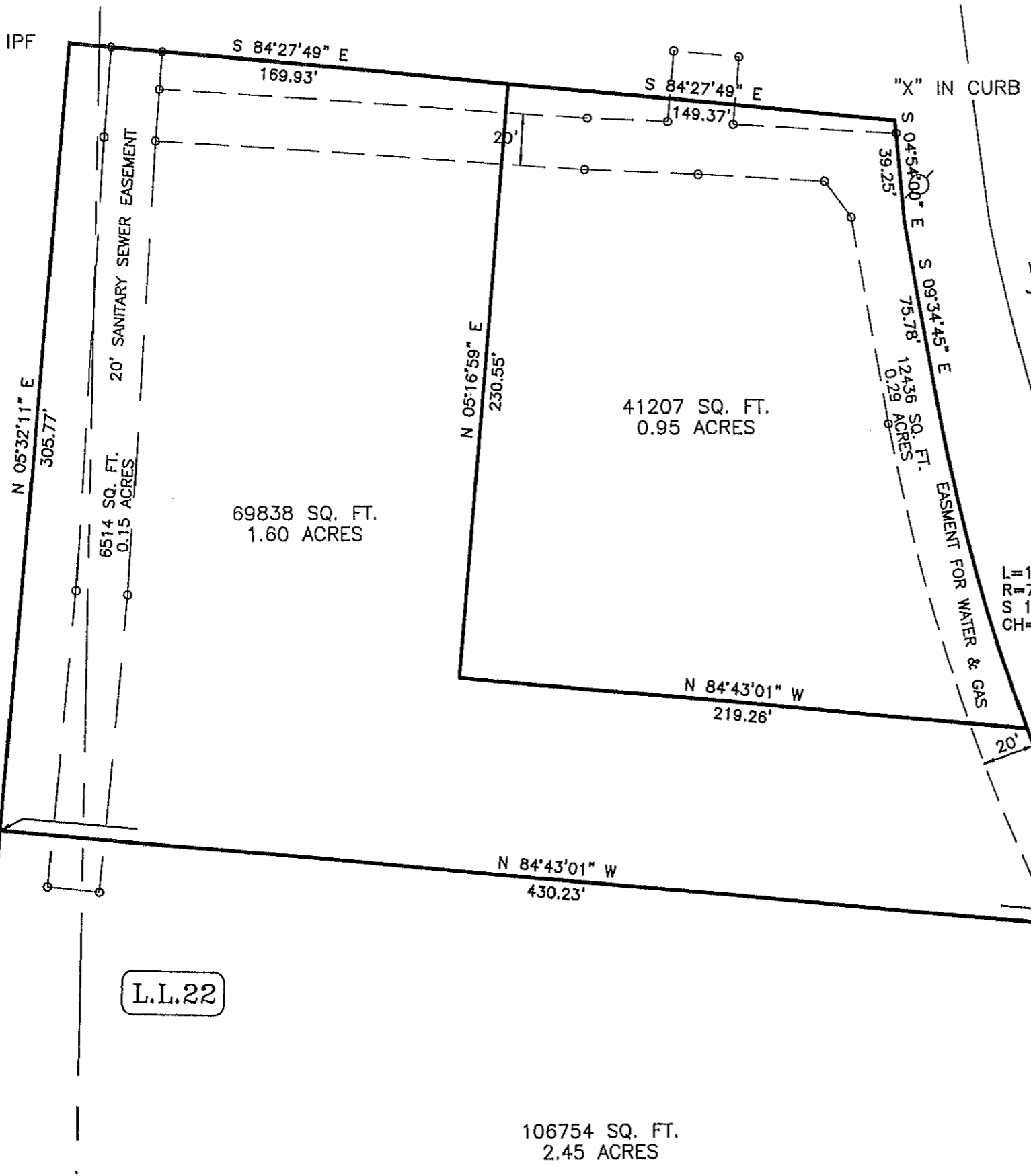


LEGEND	
IPF - IRON PIN FOUND (AS NOTED)	
IPP - IRON PIN PLACED (1/2" REBAR)	
CO - CLEAN OUT	
WM - WATER METER	
CM - CONCRETE MARKER	
PP - POWER POLE	
LP - LIGHT POLE	
POWER LINE -	
FENCE LINE -	

GENERAL SURVEY NOTES:		
THE FIELD DATA UPON WHICH THIS PLAT IS BASED HAS A CLOSURE PRECISION OF 1 FOOT IN 15,000+' AND AN ANGULAR ERROR OF 05" PER POINT, AND WAS NOT ADJUSTED. ALL ANGLES AND DISTANCES WERE MEASURED USING A SOKKIA SET 500.	PROJECT INFORMATION	THE PLAT HAS BEEN CALCULATED FOR CLOSURE AND IS FOUND TO BE ACCURATE TO WITHIN 1 FOOT IN 1,000,000+ FEET.
	FILE: 03-194	
	DATE: 1/10/05	
	SCALE: 1"=50'	

CSX RAILROAD 100'R/W

PEEPLERS VALLEY ROAD
 R/W VARIES



L.L.21

L.L.22

HART & ROZIER
 LAND SURVEYING, INC.
 29 MAPLE RIDGE DRIVE, SUITE 102
 CARTERSVILLE, GA 30120
 PHONE: (770) 382-0993 FAX: (770) 382-0993

