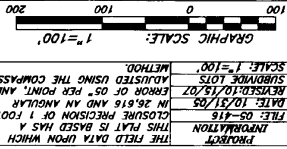


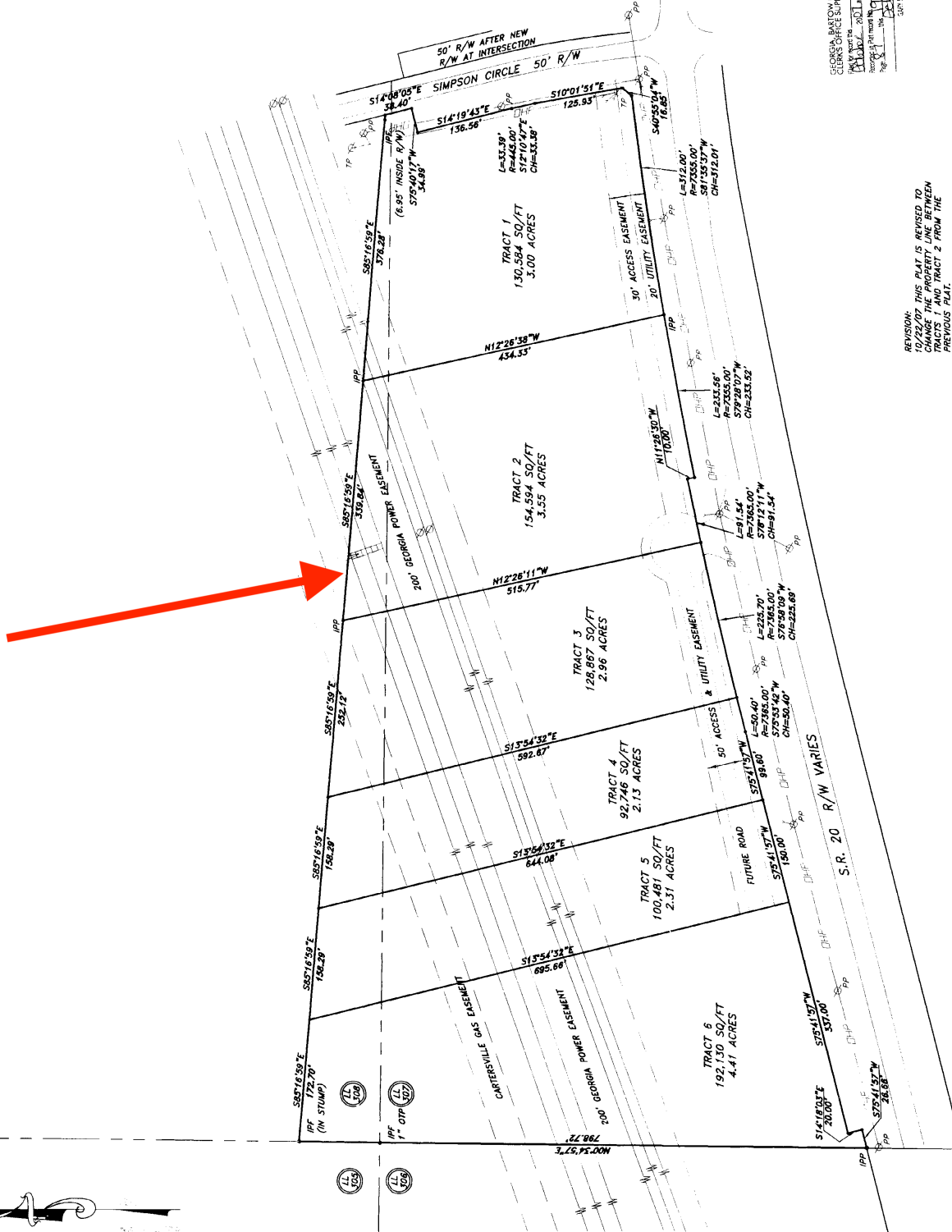
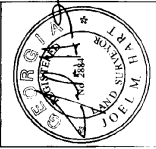
LEGEND  
 IPF - IRON PIN FOUND (AS NOTED)  
 RB - REBAR  
 OIP - OPEN TOP PIPE  
 CIP - CONCRETE TOP PIPE  
 FM - FIRE HYDRANT  
 CMF - CONCRETE MARKER FOUND  
 W - WATER VALVE  
 PP - POWER POLE  
 P - PENCE LINES

SURVEY FOR  
**CHRIS DANIEL**  
 LOCATED IN  
 LAND LOTS 307 & 308  
 3TH DISTRICT, 3RD SECTION  
 BARTON COUNTY, GEORGIA

NOTES:  
 \* ALL R'S SHOWN ARE  
 1/2" REBAR UNLESS  
 NOTED OTHERWISE.  
 \* THIS PLAT HAS BEEN  
 CALCULATED FOR  
 CLOSURE AND  
 ACCURATE TO WITHIN 1  
 FOOT IN 263.827'.  
 METHOD:  
 SURVEYED USING THE COMPASS  
 ADJUSTED TO BE  
 ACCURATE TO WITHIN 1  
 FOOT IN 263.827'.  
 DATE: 10/31/05  
 IN 26.616 AND AN ANGULAR  
 CLOSURE PRECISION OF 1 FOOT  
 IN 263.827'.  
 INFORMATION  
 THE FIELD DATA UPON WHICH  
 THIS PLAT IS BASED HAS A  
 CLOSURE PRECISION OF 1 FOOT  
 IN 263.827'.  
 SCALE: 1"=100'  
 GRAPHIC SCALE:  
 1"=100'



J.M. HART  
 LAND SURVEYING, INC.  
 29 MAPLE RIDGE DRIVE, SUITE 102  
 CARTERSVILLE, GA 30120  
 PHONE: (770) 382-0993 FAX: (770) 387-1328



REVISION:  
 THIS PLAT IS REVISED TO  
 REFLECT THE NEW REQUIRED  
 CHANGE THE PROPERTY LINE BETWEEN  
 TRACTS 1 AND TRACT 2 FROM THE  
 PREVIOUS PLAT.  
 THIS PLAT REVISED 5/31/07 TO  
 REFLECT THE NEW REQUIRED  
 CHANGE THE PROPERTY LINE BETWEEN  
 TRACTS 1 AND TRACT 2 FROM THE  
 PREVIOUS PLAT.  
 PROJECT SPT-012-01(07)

APPROVED  
 BARTON COUNTY  
 PLANNING AND ZONING DEPARTMENT  
 Ray Solomon

REVISION:  
 THIS PLAT IS REVISED TO  
 REFLECT THE NEW REQUIRED  
 CHANGE THE PROPERTY LINE BETWEEN  
 TRACTS 1 AND TRACT 2 FROM THE  
 PREVIOUS PLAT.  
 THIS PLAT REVISED 5/31/07 TO  
 REFLECT THE NEW REQUIRED  
 CHANGE THE PROPERTY LINE BETWEEN  
 TRACTS 1 AND TRACT 2 FROM THE  
 PREVIOUS PLAT.  
 PROJECT SPT-012-01(07)