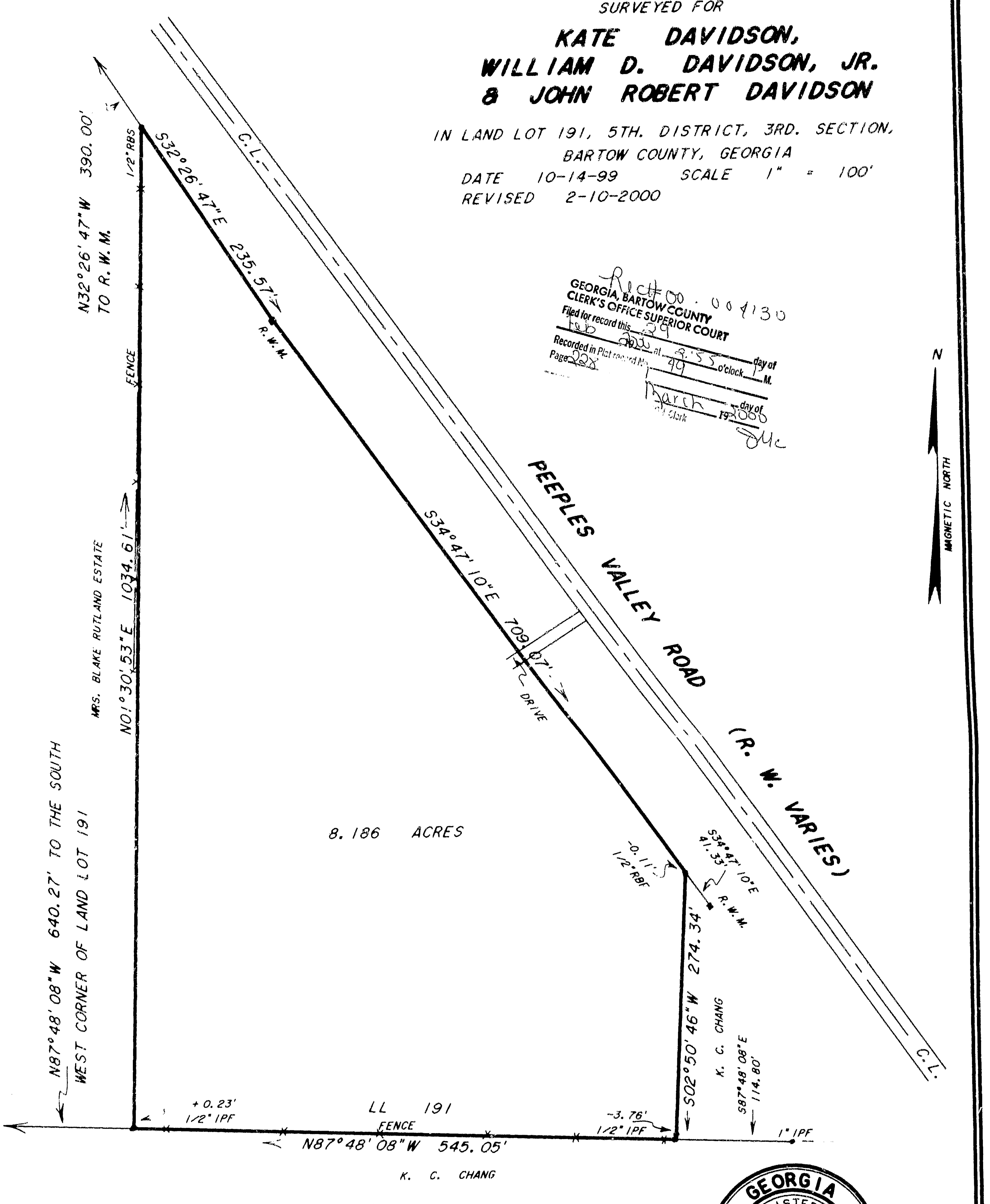
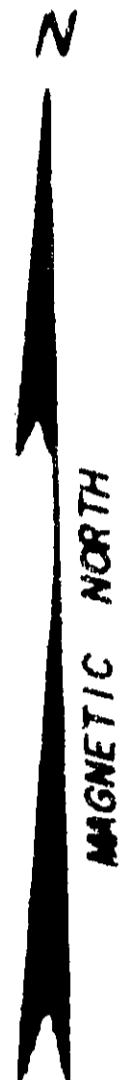


SURVEYED FOR
**KATE DAVIDSON,
 WILLIAM D. DAVIDSON, JR.
 & JOHN ROBERT DAVIDSON**

IN LAND LOT 191, 5TH. DISTRICT, 3RD. SECTION,
 BARTOW COUNTY, GEORGIA
 DATE 10-14-99 SCALE 1" = 100'
 REVISED 2-10-2000

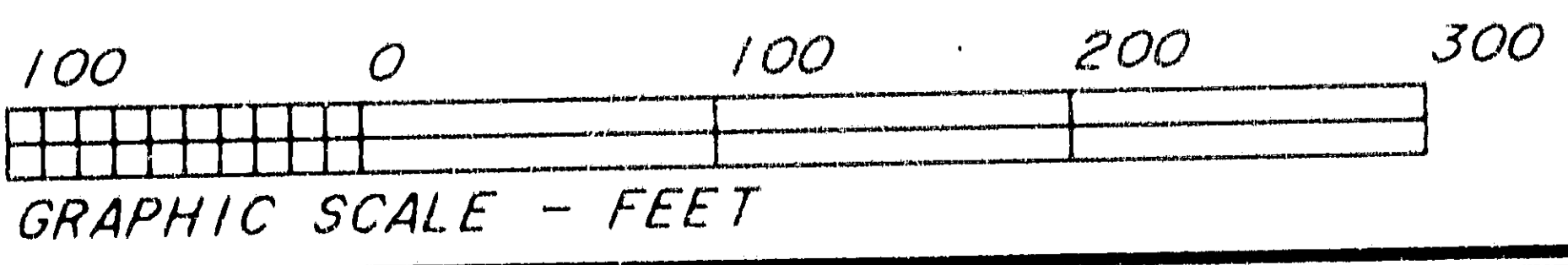
Rect 00.004130
 GEORGIA, BARTOW COUNTY
 CLERK'S OFFICE SUPERIOR COURT
 Filed for record this 29 day of Feb at 9:55 o'clock, 1999
 Recorded in Plat record No. 49 Page 228
 March 19, 2000
 JMC



8.186 ACRES

FIELD DATA:
 CLOSURE: 1' IN 18,500'
 EQUIPMENT: TOPCON GTS-303
 ANGULAR ERROR .01" PER ANGLE POINT
 BEARINGS ARE MAG. CAL. FROM ANGLES
 TURNED.
 ADJUSTED USING LEAST SQUARES
 PLAT CLOSURE 1' IN 100,000'

FEMA FLOOD HAZARD MAP 13015C0076 F
 DATED SEPTEMBER 29, 1989, SHOWS THIS
 PROPERTY OUT OF FLOOD ZONE.



Johnny R. Knight
 JOHNNY R. KNIGHT

KNIGHT & KNIGHT LAND SURVEYORS
 172 ROWLAND SPRINGS ROAD, SE
 CARTERSVILLE, GEORGIA 30121
 TELEPHONE (770) 382-7975
 OR (770) 336-5484