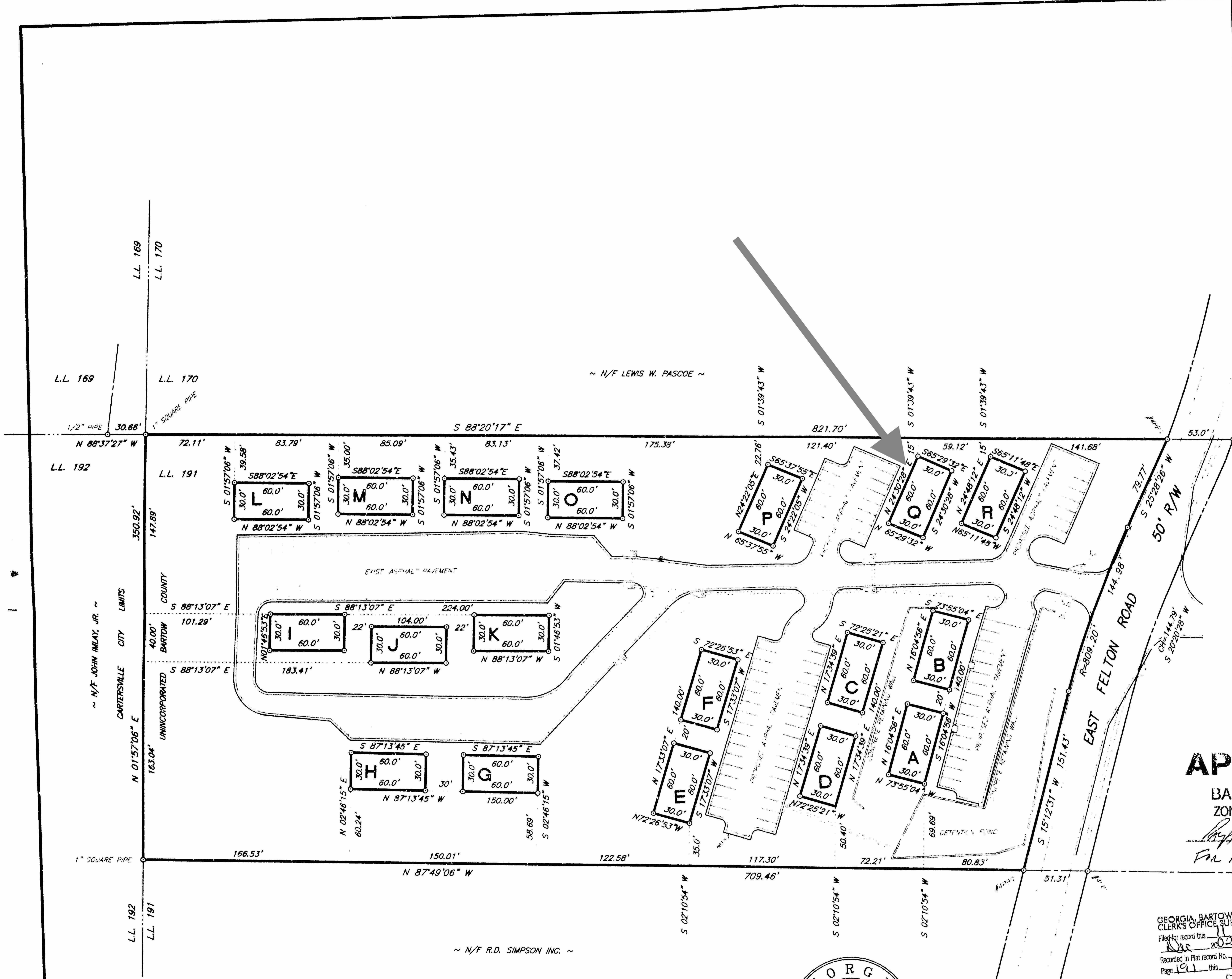


LOCATION MAP 1" = 2000'



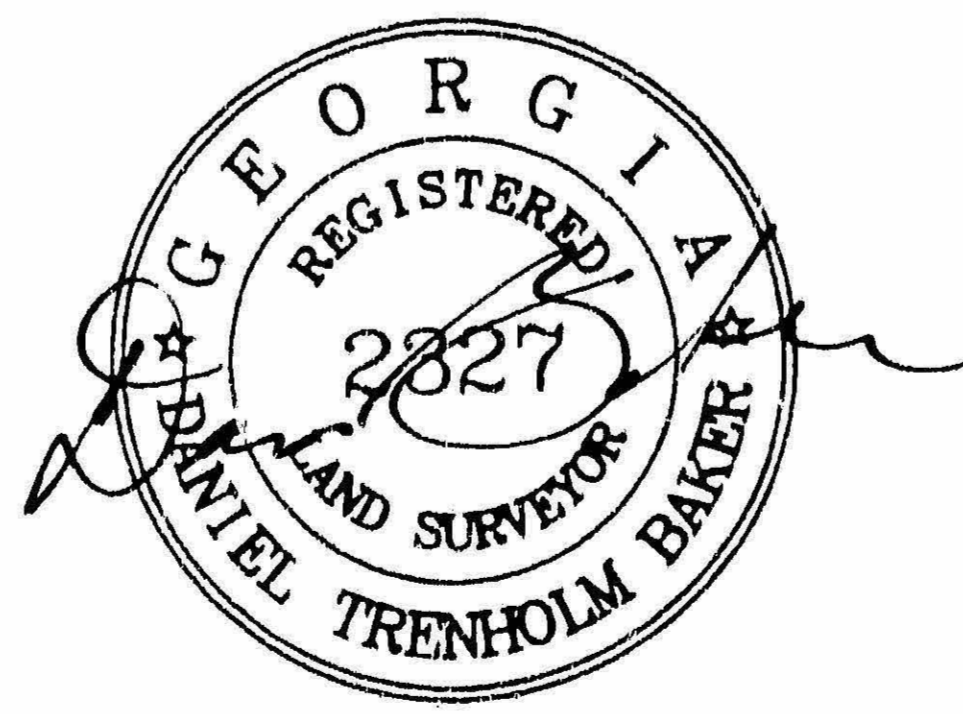
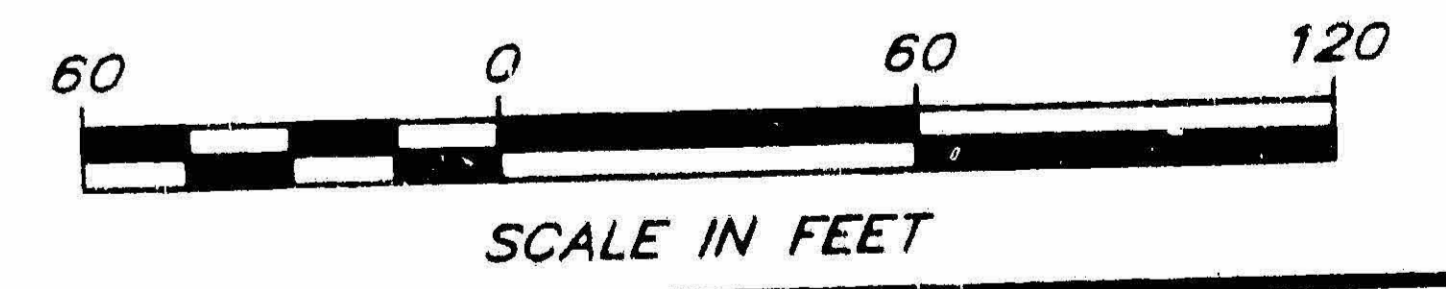
**APPROVED**

BARTOW COUNTY  
ZONING ADMINISTRATOR

*[Signature]* 12/11/2002  
For Recording only

6.16 AC.

GEORGIA, BARTOW COUNTY  
CLERK'S OFFICE SUPERIOR COURT  
Filed for record this 11 day of Dec 2002 at 11:25 o'clock A.M.  
Recorded in Plat record No. 125  
Page 191 this 12 day of Dec 2002  
GARY BELL, Clerk



DATE : 12-09-02  
SCALE : 1" = 60'  
DRAWN BY : KLF  
CHECKED BY : DTB  
2606/STONE/STONEPLAT

**GASKINS & BAKER**  
SURVEYORS/ENGINEERS

CARTERSVILLE, GEORGIA  
(770) 382-5969

SURVEY FOR  
**Stonewall Falls Apartments**

LOCATED IN L.L. 191  
4th DIST., 3rd SECT.,  
BARTOW COUNTY, GA.

THIS PLAT IS PREPARED FROM A FIELD SURVEY USING A FIVE SECOND DIGITAL THEODOLITE AND ELECTRONIC DISTANCE METER; LINEAR PRECISION OF TRAVERSE: 1/10,000+; ANGULAR PRECISION: 10" ±. THE TRAVERSE WAS ADJUSTED USING THE COMPASS RULE. LINEAR PRECISION OF THIS PLAT: 1/216,364. MATTERS OF TITLE ARE EXCEPTED.

THIS PARCEL OF LAND IS NOT IN THE 100 YEAR FLOOD PLAIN; ACCORDING TO F.E.M.A. (F.I.A.) COMMUNITY PANEL 13015 c 0087 f DATED SEPTEMBER 29, 1989.