

Doc # 75-014901  
 GEORGIA, BARTOW COUNTY  
 CLERK'S OFFICE SUPERIOR COURT

Filed for record this 4 day of  
Aug 1995 at 4/1 o'clock P M.

Recorded in Plat record No. 39

Page 185 this 8 day of  
Aug 1995

TISH JOHNSON, Clerk

SURVEYED FOR  
**WILLIAM W. PUCKETT, JR.**

**8**

**PATTY M. PUCKETT**

PART OF LOT 26, JORDAN SUBDIVISION, IN LAND  
 LOT 14, 4TH. DISTRICT, 3RD. SECTION,  
 BARTOW COUNTY, GEORGIA

DATE 8-01-95 SCALE 1" = 40'

FIELD DATA:

CLOSURE: 1" IN 28,450'

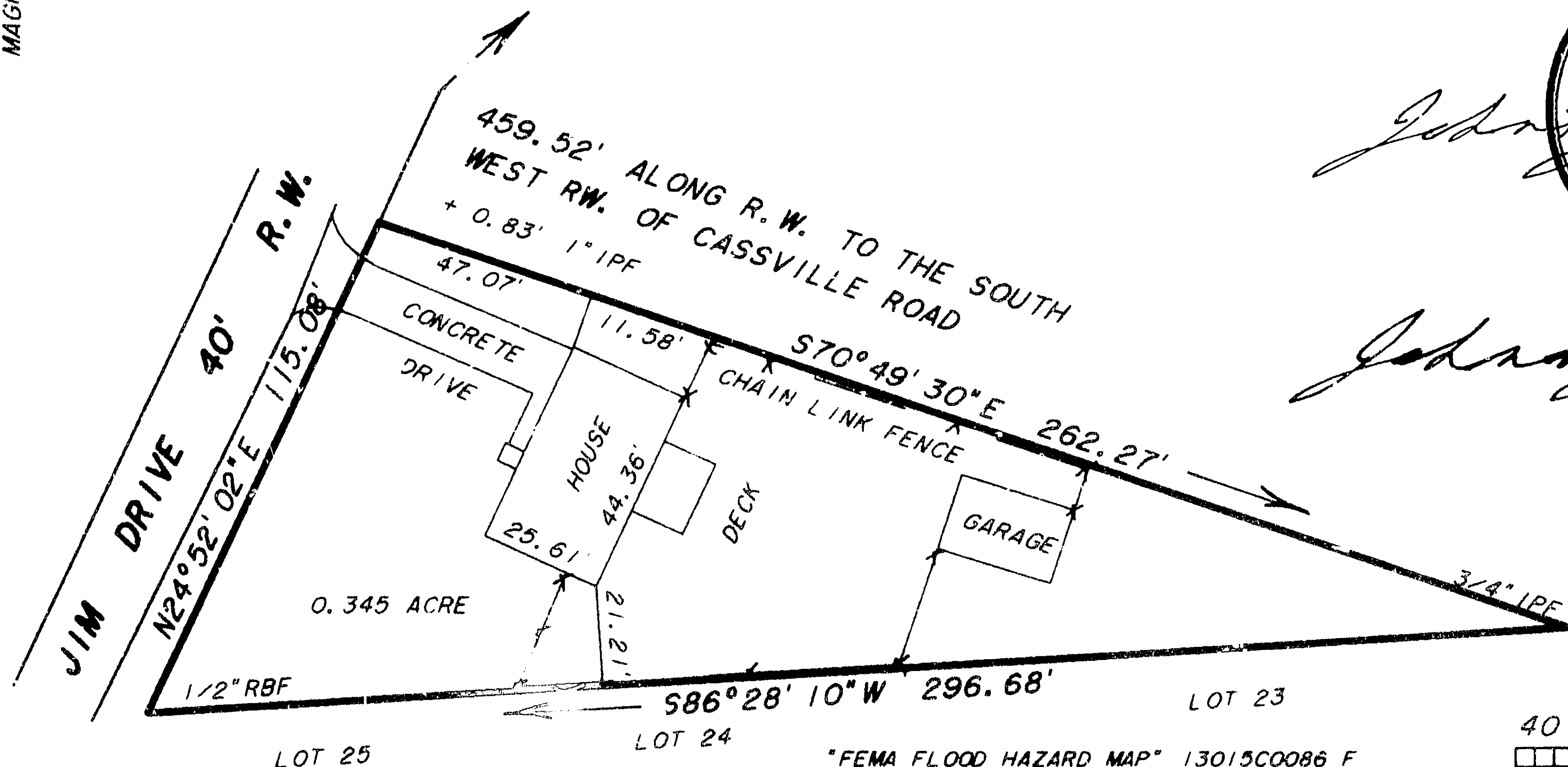
EQUIPMENT: TOPCON GTS-303

ANGULAR ERROR 06" PER ANGLE POINT  
 BEARINGS ARE MAG. CAL. FROM ANGLES  
 TURNED.

ADJUSTED USING LEAST SQUARES

PLAT CLOSURE 1" IN 100,000'

MAGNETIC NORTH



*Johnny R. Knight*  
 Johnny R. Knight

KNIGHT & KNIGHT LAND SURVEYORS  
 172 ROWLAND SPRINGS ROAD, SE  
 CARTERSVILLE, GEORGIA 30120  
 TELEPHONE 404-382-7975  
 OR 404-336-5484

"FEMA FLOOD HAZARD MAP" 13015C0086 F  
 SHOWS THIS PROPERTY OUT OF FLOOD ZONE.

