

29-82

ASSOCIATED SURVEYORS
LAND AND ENGINEERS SURVEYS
POST OFFICE BOX 175
ROCKMART, GEORGIA 30153
684-3717

SURVEY FOR

CLIFF MARTIN

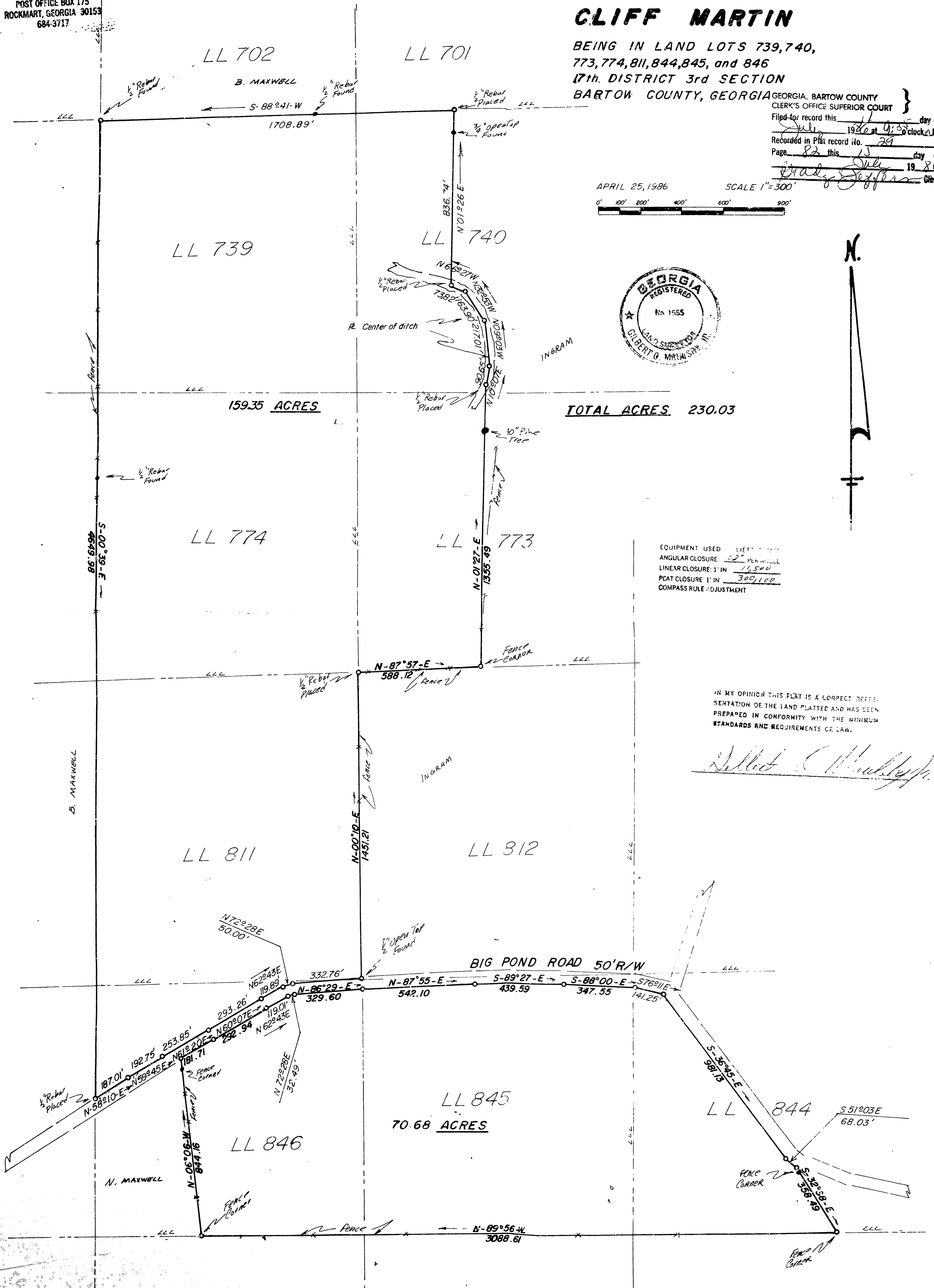
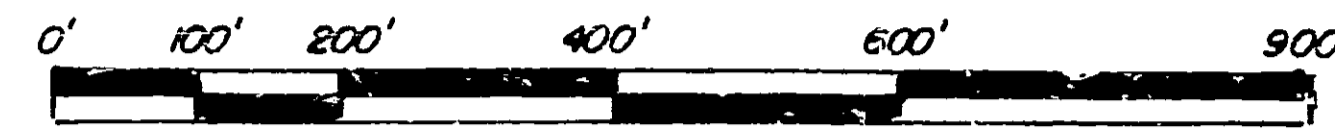
BEING IN LAND LOTS 739, 740,
773, 774, 811, 844, 845, and 846
17th. DISTRICT 3rd SECTION
BARTOW COUNTY, GEORGIA

GEORGIA, BARTOW COUNTY
CLERK'S OFFICE SUPERIOR COURT

Filed for record this 15 day of
July 1986 at 9:30 o'clock A.M.
Recorded in Plat record no. 29
Page 82 this 15 day of
July 1986
Cliff Martin Clerk

APRIL 25, 1986

SCALE 1"=300'



159.35 ACRES

TOTAL ACRES 230.03

70.68 ACRES

EQUIPMENT USED LIETZ
ANGULAR CLOSURE: 32" PERMITS
LINEAR CLOSURE: 1" IN 11,500
PLAT CLOSURE: 1" IN 300,100
COMPASS RULE ADJUSTMENT

IN MY OPINION THIS PLAT IS A CORRECT REPRESENTATION OF THE LAND PLATTED AND HAS BEEN PREPARED IN CONFORMITY WITH THE MINIMUM STANDARDS AND REQUIREMENTS OF LAW.

Gilbert G. Marlow

MICROFILM