



LEGEND

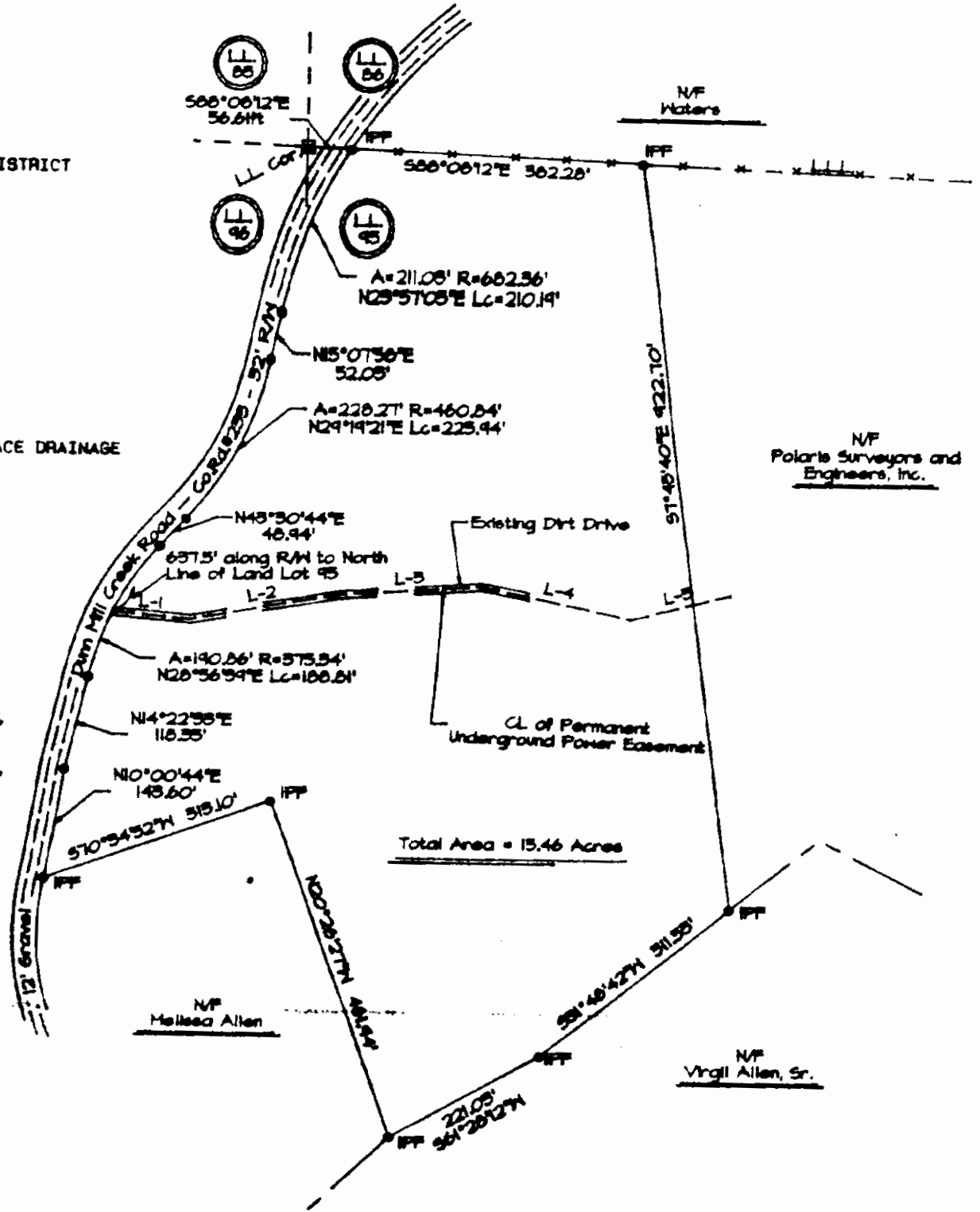
- I.P.F. * IRON PIN FOUND
- I.P.S. * IRON PIN SET
- O.T. * OPEN TOP
- R/W * RIGHT OF WAY
- P.L. * PROPERTY LINE
- C.L. * CENTER LINE
- B.L. * BUILDING LINE
- L.L. * LAND LOT
- L.L.L. * LAND LOT LINE
- G.M.D. * GEORGIA MILITIA DISTRICT
- P.P. * POWER POLE
- P.L. * POWER LINE
- X- * FENCE LINE
- R. * RADIUS
- CH. * CHORD
- TAN. * TANGENT
- N/F * NON OR FORMERLY
- D.B. * DEED BOOK
- P.B. * PLAT BOOK
- P.G. * PAGE
- D.E. * DRAINAGE EASEMENT
- S.E. * SEWER EASEMENT
- F.H. * FIRE HYDRANT
- M.H. * MANHOLE
- C.B. * CATCH BASIN
- - - * DIRECTION OF SURFACE DRAINAGE

References:

- Survey for Jesse Stewart and Marie Stewart dated February 28, 1966, by Lane S. Bishop and Associates, Georgia R.L.S. 1575, and
- Survey for Virgil Allen, Sr. dated January 21, 1999, by Lane S. Bishop and Associates, Georgia R.L.S. 1575, and
- Survey for Melissa Allen, dated January 21, 1999 by Lane S. Bishop and Associates, Georgia R.L.S. 1575, and
- Survey for Polaris Surveyors and Engineers, Inc., dated December 06, 1999, by Polaris Surveyors and Engineers, Inc., Georgia R.L.S. 2568.

Underground Power Easement:

LINE	BEARINGS	DISTANCE
L-1	S65°00'00"E	100.00%
L-2	N60°30'00"E	191.81%
L-3	N66°25'01"E	185.95%
L-4	S78°00'00"E	199.24%
L-5	N76°00'00"E	135.00%



N/F
Polaris Surveyors and Engineers, Inc.



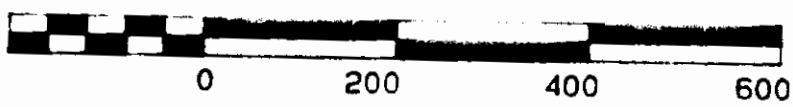
GEORGIA, FANNIN COUNTY
 CLERK OF SUPERIOR COURT OFFICE
 FILED FOR RECORD 4-10-2000
 AT 9A M RECORDED 4-10-2000
 PLAT HANGER C-7 PAGE 2
John W. Chatham
 CLERK OF SUPERIOR COURT

THE FIELD DATA UPON WHICH THIS PLAT IS BASED HAS A CLOSURE PRECISION OF ONE FOOT IN 23,500 FEET AND AN ANGULAR ERROR OF 0.2" PER ANGLE POINT, AND WAS ADJUSTED USING THE COMPASS RULE.
 THE EQUIPMENT USED TO OBTAIN THE LINEAR AND ANGULAR MEASUREMENTS WAS A TOPCON 575-300. THIS PLAT HAS BEEN CALCULATED FOR CLOSURE AND IS FOUND TO BE ACCURATE WITHIN ONE FOOT IN 100,000 FEET. +

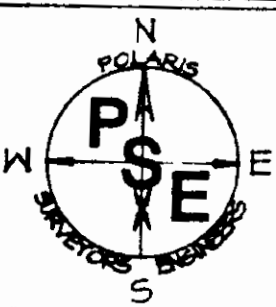
In my opinion, this plat is a true representation of the land platted and has been prepared in conformity with the minimum standards and requirements of law.

E. G. Davis

GRAPHIC SCALE 1" = 200'



Plat of Property for:	
VIRGIL ALLEN, SR.	
LAND LOT 95 and 96	DISTRICT 9, 2nd Section
FANNIN COUNTY	GEORGIA
SCALE 1" = 200'	DATE February 29, 2000
NOTES	
JOB NO.	



POLARIS
 Surveyors and Engineers, Inc.
 3040 Barcelona Way
 Conyers, Georgia 30012
 (770) 482-6604