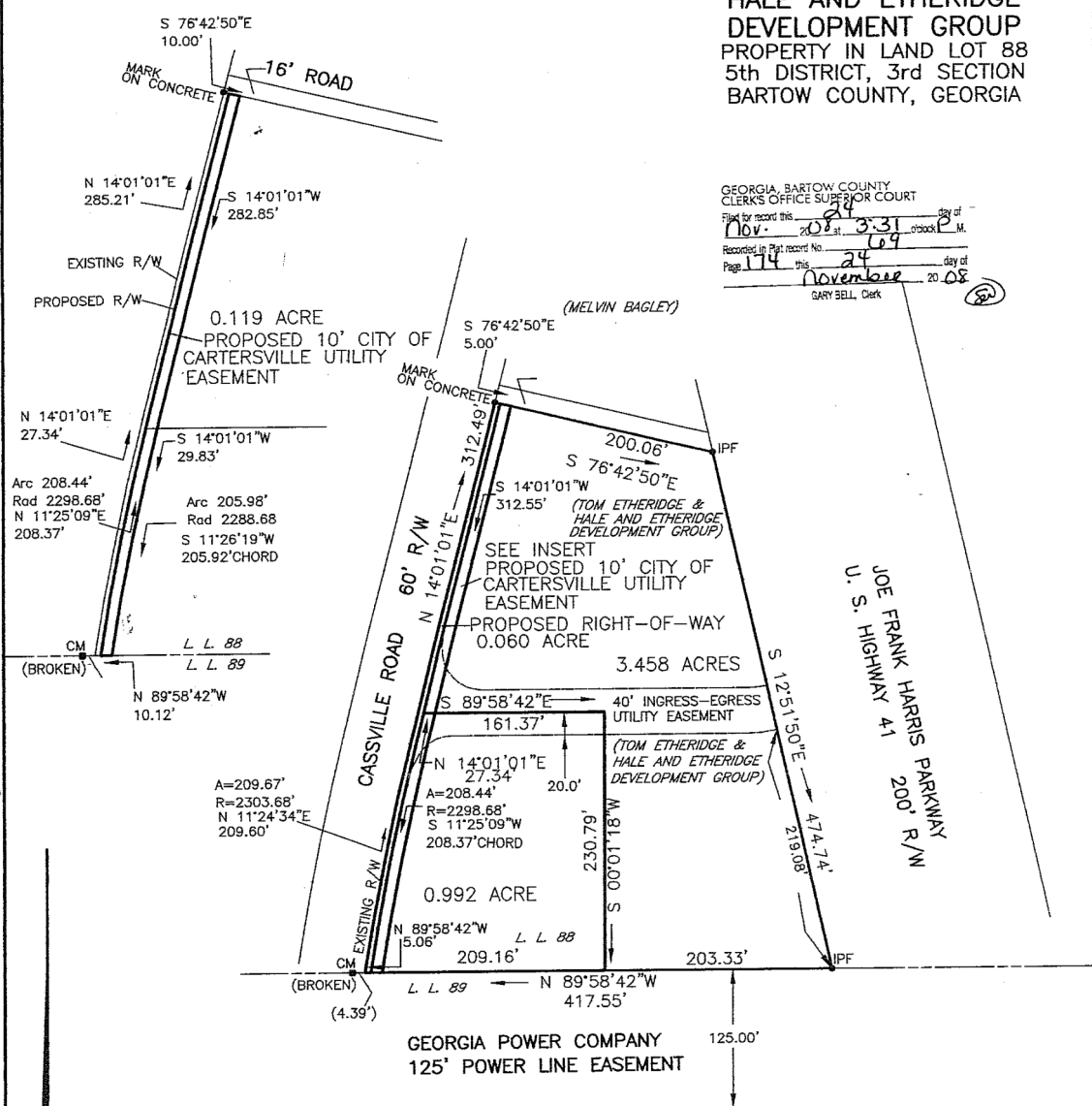


SURVEY FOR
**TOM ETHERIDGE &
 HALE AND ETHERIDGE
 DEVELOPMENT GROUP**
 PROPERTY IN LAND LOT 88
 5th DISTRICT, 3rd SECTION
 BARTOW COUNTY, GEORGIA

GEORGIA, BARTOW COUNTY
 CLERK'S OFFICE SUPERIOR COURT
 Filed for record this 21st day of
 Nov. 2008 at 3:31 P.M.
 Recorded in Plat record No. 69
 Page 174 this 24th day of
 November 2008
 GARY BELL, Clerk



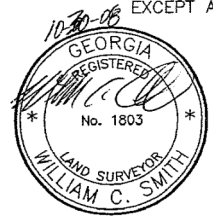
FIELD TRAVERSE:
 CLOSURE; ONE FOOT IN 38,000 FEET
 USING A LIETZ SET 3.
 ANGULAR ERROR; 0°00'10" PER ANGLE
 POINT USING A LIETZ SET 3.
 ADJUSTED; USING THE COMPASS RULE.

SMITH & SMITH LAND SURVEYORS, P.C.
 2 SOUTH AVENUE, CARTERSVILLE, GA. 30120
 PHONE 770-382-0457
 REGISTERED LAND SURVEYOR No. 1803

3071SP.CRD 3071-7.DWG
 FLOOD INSURANCE RATE MAP 13015C0251 G
 DATED SEPT.28,2007 SHOWS THIS PROPERTY
 IS NOT IN THE 100 YEAR FLOOD ZONE.

NOTE: IRON PINS ARE (1/2"RE-BAR)
 EXCEPT AS SHOWN.

PLAT CLOSURE;
 ONE FOOT IN
 143,000 FEET.
 OCTOBER 30, 2008



GEORGIA ZONE WEST
 GRID NORTH

R/W	RIGHT OF WAY	R	RADIUS LP	LIGHT POLE
IPF	IRON PIN PLACED	-X-X-	FENCE	
IPF	IRON PIN FOUND	---	LAND LOT LINE	
CM	CONCRETE MARKER	---	CENTER LINE	
CH	CHORD	---	POWER LINE	
L OR A	LENGTH OF CURVE	PP	POWER POLE	

