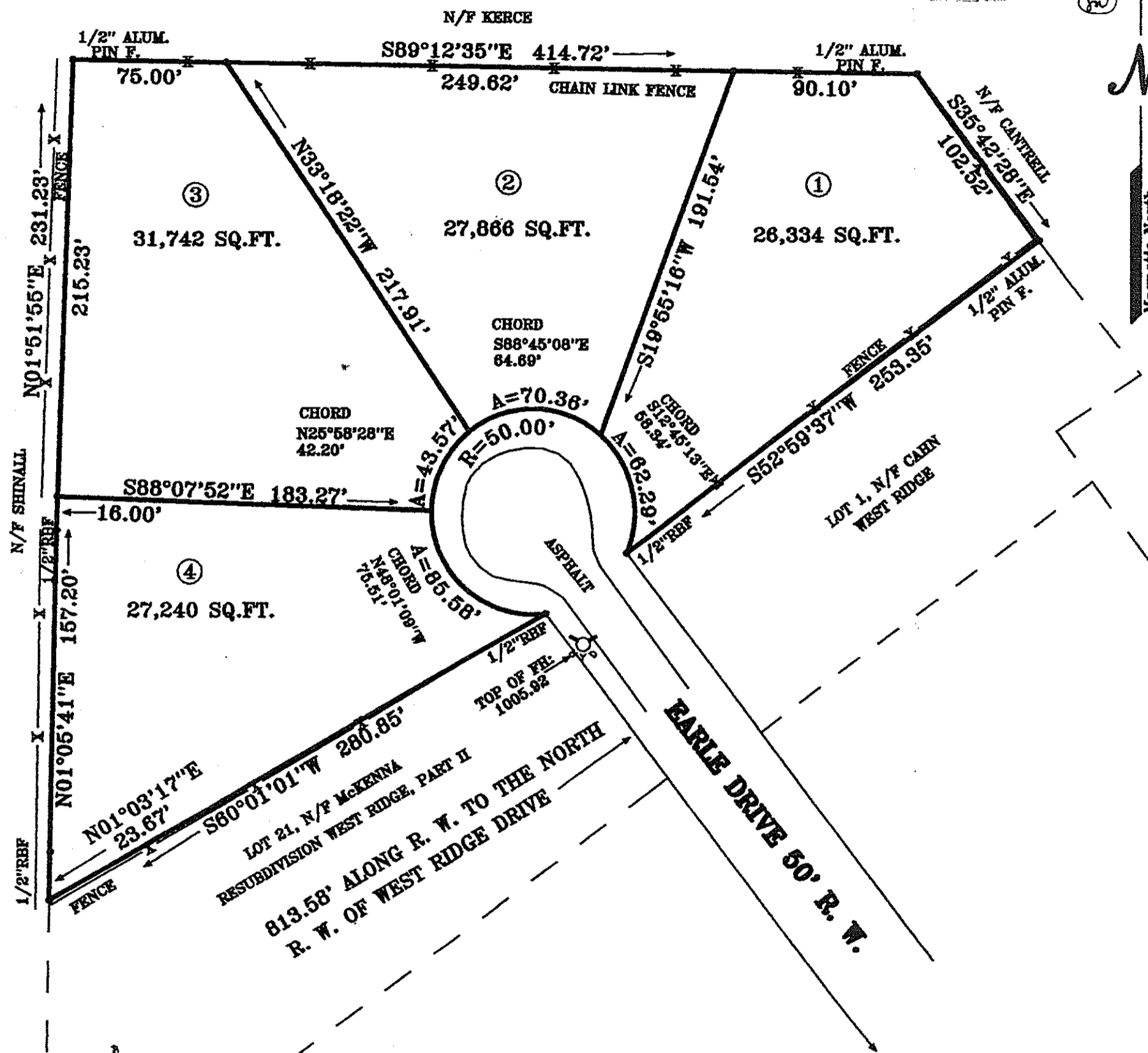


SURVEYED FOR
MIKE McMILLAN HOMES, INC.

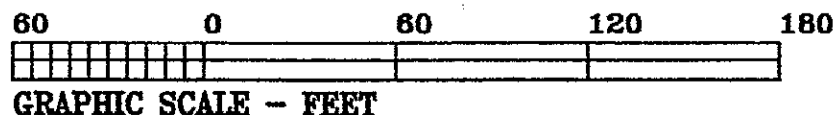
IN LAND LOT 39, 4TH. DISTRICT, 3RD. SECTION,
BARTOW COUNTY, GEORGIA
DATE OF PLAT 3-07-2008 SCALE 1" = 60'
DATE OF FIELD WORK 3-06-2008

GEORGIA, BARTOW COUNTY
CLERKS OFFICE SUPERIOR COURT
Filed for record this 19 day of March 2009 at 3:41 o'clock P.M.
Recorded in Plat record No. 70
Page 58 this 19 day of March 2009
BARRY BELL, Clerk (F)



KNIGHT & KNIGHT LAND SURVEYORS, LLC
116 CENTER ROAD
CARTERSVILLE, GEORGIA 30121
TELEPHONE (770) 382-7975
or (770) 382-5525

FIELD DATA:
CLOSURE: 1' IN 23,500'
EQUIPMENT: TOPCON GTS-303
ANGULAR ERROR 03" PER ANGLE POINT
BEARINGS ARE MAG. CAL. FROM ANGLES
TURNED.
ADJUSTED USING LEAST SQUARES
PLAT CLOSURE 1' IN 100,000'
"FEMA FLOOD HAZARD MAP" 13015C0280G
DATE SEPTEMBER 28, 2007, SHOWS THIS
PROPERTY OUT OF FLOOD ZONE.



NOTE: THIS PLAT IS MADE FOR THE SOLE USE AND
BENEFIT OF THE PERSON OR PERSONS NAMED HEREON.
THIS FIRM ASSUMES NO LIABILITY TO PERSONS NOT
NAMED HEREON AND ANY USE BY UNNAMED PARTIES
WILL BE DONE AT THEIR OWN RISK.