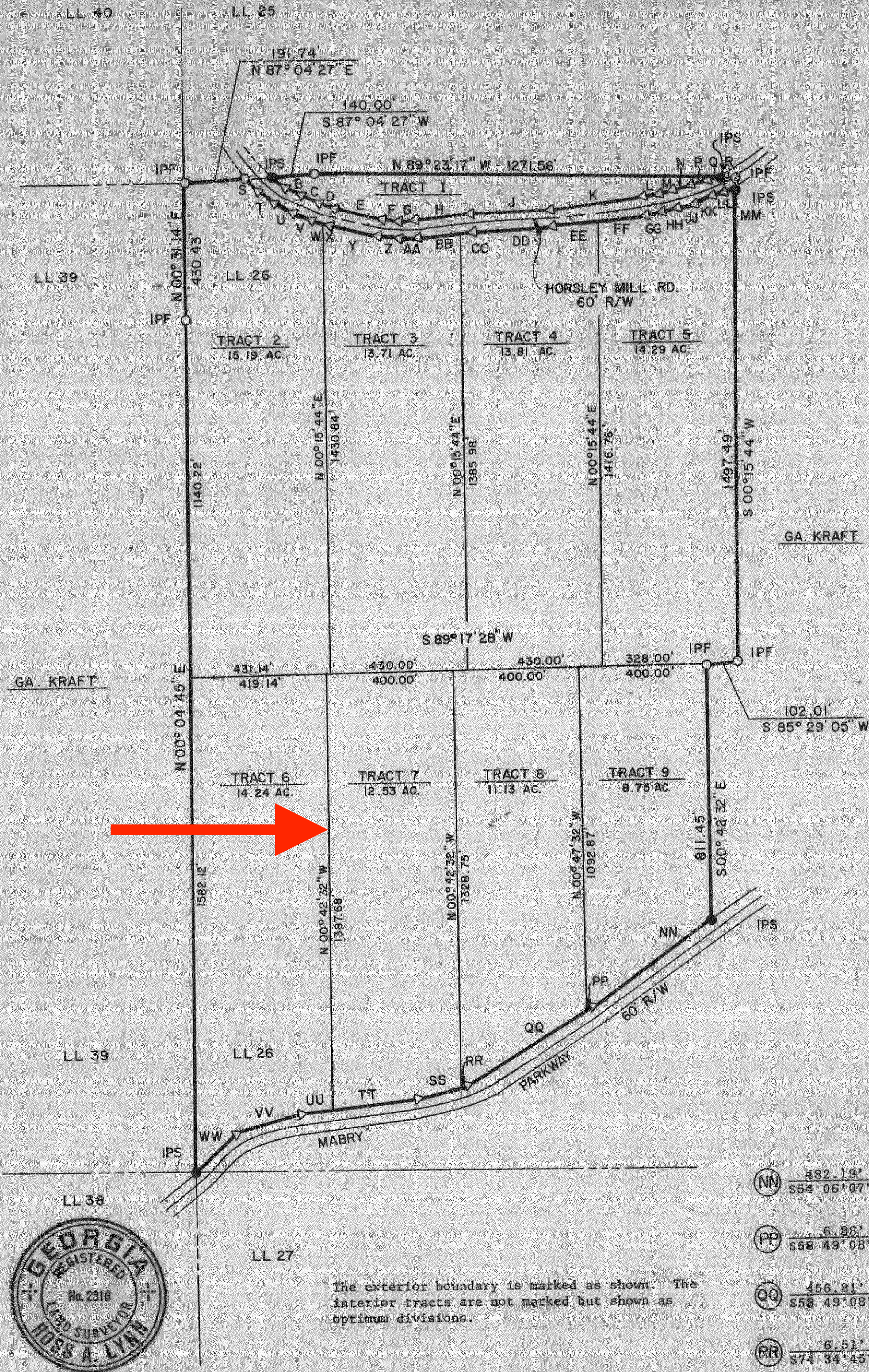


SURVEY FOR
SOUTHWOOD PARTNERS
 LAND LOT 26 DISTRICT 5
 CARROLL COUNTY, GEORGIA
 OCTOBER 26, 1987



| | | |
|----------------------------|----------------------------|---------------------------|
| (A) 53.29' S54°05'52"E | (F) 44.12' S82°56'10"E | (L) 46.57' N81°16'51"E |
| (B) 56.93' S61°13'10"E | (G) 52.61' N86°54'53"E | (M) 46.56' N76°56'15"E |
| (C) 56.93' S66°47'29"E | (H) 179.24' N84°41'19"E | (N) 46.57' N72°35'38"E |
| (D) 56.93' S72°21'48"E | (J) 248.26' N86°17'07"E | (P) 71.87' N70°25'21"E |
| (E) 156.05' S75°08'57"E | (K) 296.86' N83°27'08"E | (Q) 41.73' N72°45'41"E |
| | | (R) 38.19' S89°23'17"E |

| LEGEND | |
|----------------------|------------------------|
| ● IPS IRON PIN SET | □ CM CONCRETE MONUMENT |
| ○ IPF IRON PIN FOUND | ○ PP POWER POLE |
| — PROPERTY LINE | FC FENCE CORNER |
| - - - LAND LOT LINE | △ BM BENCHMARK |
| - - - RIGHT-OF-WAY | TM TEMPORARY BENCHMARK |
| - - - CENTER LINE | † CEMETERY |
| — FENCE | ⊙ TREE/SHRUB |
| — CREEK BRANCH | ○ HEDGE ROW |
| — POWER LINE | ⊙ MARSH/SWAMP |
| — TELEPHONE LINE | ⊙ FH FIRE HYDRANT |
| — GAS LINE | □ MH WATER METER |
| — WATER LINE | □ GH GAS METER |
| — SANITARY SEWER | ○ MH MANHOLE |



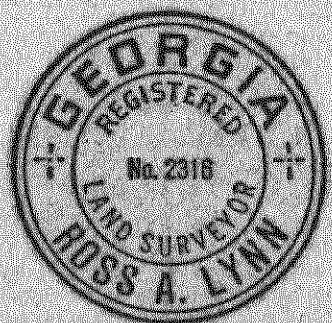
This survey was made using electronic distance measuring equipment to obtain linear measurements, and a micrometer theodolite with direct reading to 05 seconds was used to obtain angular measurements.

The field data upon which this map or plat is based has a closure precision of one foot in 16,614 feet and an angular error of 1" per angle point, and was adjusted using COMPASS rule.

This map or plat has been calculated for closure and is found to be accurate within one foot in 400,000 feet.

There is no known National Geodetic Survey Monument within 500 feet of any point on the property platted, or any point of reference shown thereon.

| | | |
|-----------------------------|-----------------------------|----------------------------|
| (S) 59.85' S45°37'17"E | (Z) 60.42' S82°56'10"E | (GG) 51.11' N81°16'51"E |
| (T) 62.36' S54°05'52"E | (AA) 57.38' N86°54'53"E | (HH) 51.11' N76°56'15"E |
| (U) 62.76' S61°13'10"E | (BB) 137.36' N84°41'19"E | (JJ) 51.11' N72°35'38"E |
| (V) 62.76' S66°47'29"E | (CC) 41.04' N84°41'19"E | (KK) 71.87' N70°25'21"E |
| (W) 36.63' S72°21'48"E | (DD) 248.91' N86°17'08"E | (LL) 36.83' N72°45'41"E |
| (X) 26.13' S72°21'48"E | (EE) 141.78' N83°27'08"E | (MM) 23.16' N76°34'16"E |
| (Y) 156.05' S75°08'57"E | (FF) 156.56' N83°27'08"E | |
| (SS) 139.82' S74°34'45"W | | |
| (NN) 482.19' S54°06'07"W | (TT) 265.94' S89°40'33"W | |
| (PP) 6.88' S58°49'08"W | (UU) 103.73' S83°40'33"W | |
| (QQ) 456.81' S58°49'08"W | (VV) 210.67' S71°36'20"W | |
| (RR) 6.51' S74°34'45"W | (WW) 182.86' S47°47'40"W | |



CERTIFICATION: I hereby certify this plat to be a true and accurate representation of the property recorded hereon.
Ross A. Lynn
 Ga. Reg. Land Surveyor, No. 2316

The exterior boundary is marked as shown. The interior tracts are not marked but shown as optimum divisions.

Keck & Wood, Inc. ENGINEERS SURVEYORS PLANNERS
 203 TANNER STREET, CARROLLTON, GEORGIA 30215-1154 860118

FILED
 GA. CARROLL COUNTY
 CLERK - SUPERIOR COURT
 1987 NOV 24 AM 9:55