



THIS PROPERTY IS SUBJECT TO ALL RIGHT OF WAYS AND EASEMENTS OF RECORD.

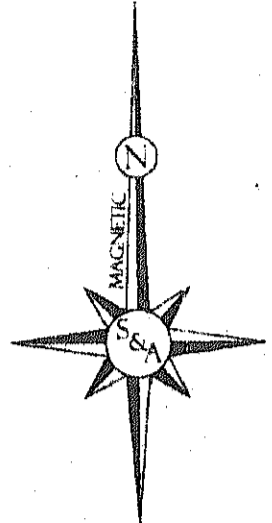
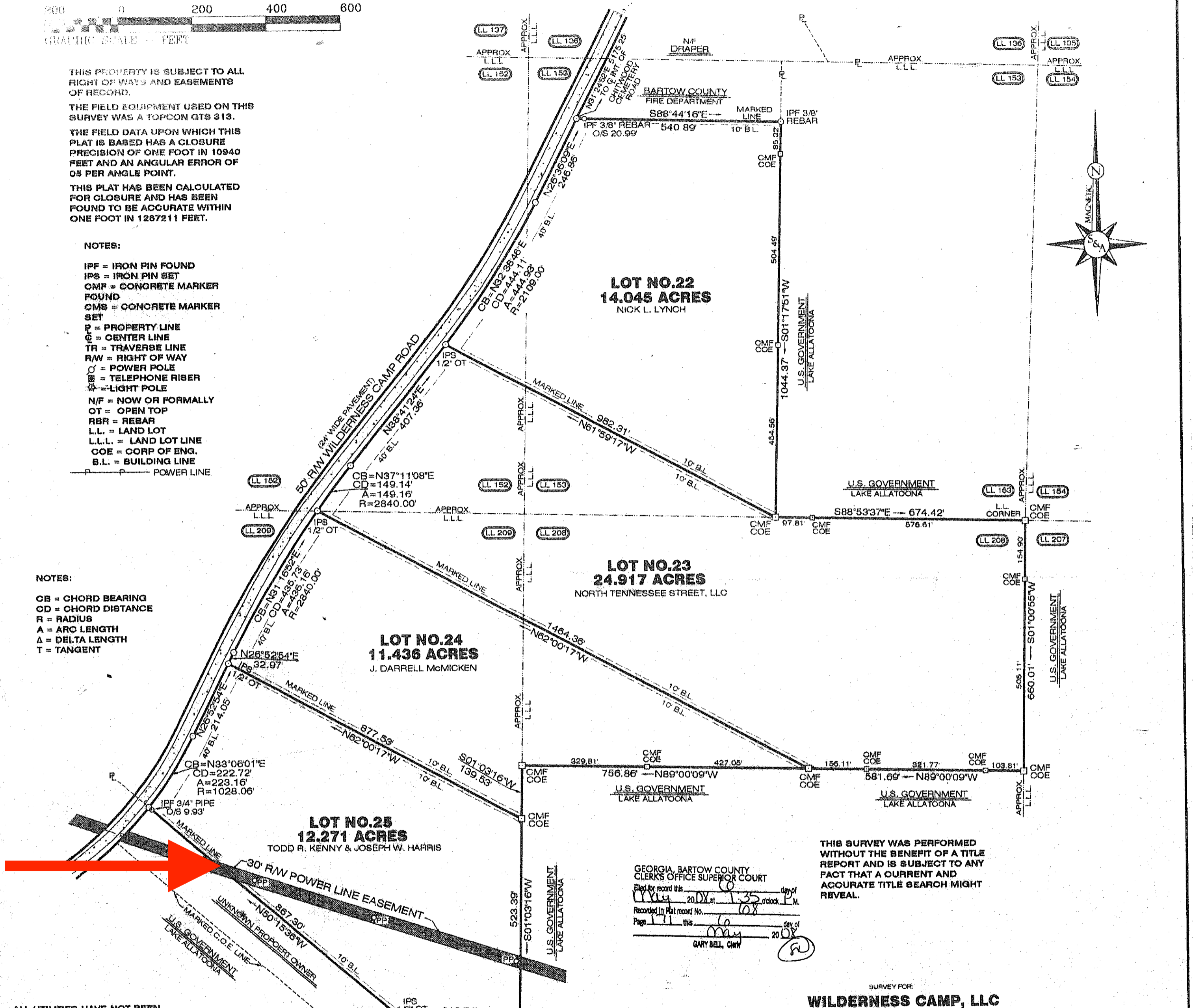
THE FIELD EQUIPMENT USED ON THIS SURVEY WAS A TOPCON GTS 313.

THE FIELD DATA UPON WHICH THIS PLAT IS BASED HAS A CLOSURE PRECISION OF ONE FOOT IN 10940 FEET AND AN ANGULAR ERROR OF 05 PER ANGLE POINT.

THIS PLAT HAS BEEN CALCULATED FOR CLOSURE AND HAS BEEN FOUND TO BE ACCURATE WITHIN ONE FOOT IN 1267211 FEET.

- NOTES:
- IPF = IRON PIN FOUND
 - IPB = IRON PIN SET
 - CMF = CONCRETE MARKER FOUND
 - CMS = CONCRETE MARKER SET
 - P = PROPERTY LINE
 - C = CENTER LINE
 - TR = TRAVERSE LINE
 - R/W = RIGHT OF WAY
 - OP = OPEN TOP
 - RBR = REBAR
 - L.L. = LAND LOT
 - L.L.L. = LAND LOT LINE
 - COE = CORP OF ENG.
 - B.L. = BUILDING LINE
 - — — POWER LINE

- NOTES:
- CB = CHORD BEARING
 - CD = CHORD DISTANCE
 - R = RADIUS
 - A = ARC LENGTH
 - Δ = DELTA LENGTH
 - T = TANGENT



GEORGIA, BARTOW COUNTY
CLERK'S OFFICE SUPERIOR COURT

Filed for record this 10 day of May 2008 at 1:35 o'clock P.M.

Recorded in Plat record No. 108

Page 11 this 10 day of May 2008

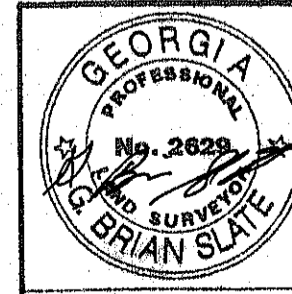
GARY BELL, Clerk

THIS SURVEY WAS PERFORMED WITHOUT THE BENEFIT OF A TITLE REPORT AND IS SUBJECT TO ANY FACT THAT A CURRENT AND ACCURATE TITLE SEARCH MIGHT REVEAL.

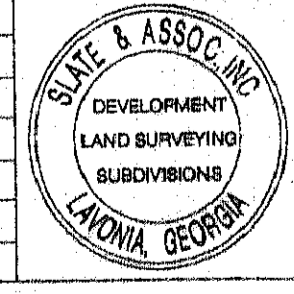
ALL UTILITIES HAVE NOT BEEN LOCATED ON THIS SURVEY. THE PROPERTY IS SUBJECT TO ALL RIGHT OF WAYS AND EASEMENTS OF RECORD.

SURVEYED BY:
SLATE AND ASSOCIATES, INC.
G. BRIAN SLATE, RLS#2629
12810 AUGUSTA ROAD
LAVONIA, GEORGIA 30553
706-356-8800

PLAT REF:
DB 1778, PG 712
PB 47, PG 172



SURVEY FOR WILDERNESS CAMP, LLC	
LOT NO.'S 22-25, 62.666 ACRES	REVISIONS:
SURVEYED FOR THE PROPERTY OF WILDERNESS CAMP, LLC	CC: CH
L.L. 152, 153, 208 & 209, 2nd SECT., 21st DIST.	DRAWN BY: GE, BS
BARTOW COUNTY, GEORGIA	CHECKED BY: BS
SURVEYED: APRIL 21, 2008	JOB #: 4346
SCALE 1" = 200'	FILE #:



IN MY OPINION, THIS IS A CORRECT REPRESENTATION OF THE LAND PLATTED AND HAS BEEN PREPARED IN CONFORMITY WITH THE MINIMUM STANDARDS AND REQUIREMENTS OF LAW.

G. Brian Slate
GEORGIA PROFESSIONAL LAND SURVEYOR, RLS#2629