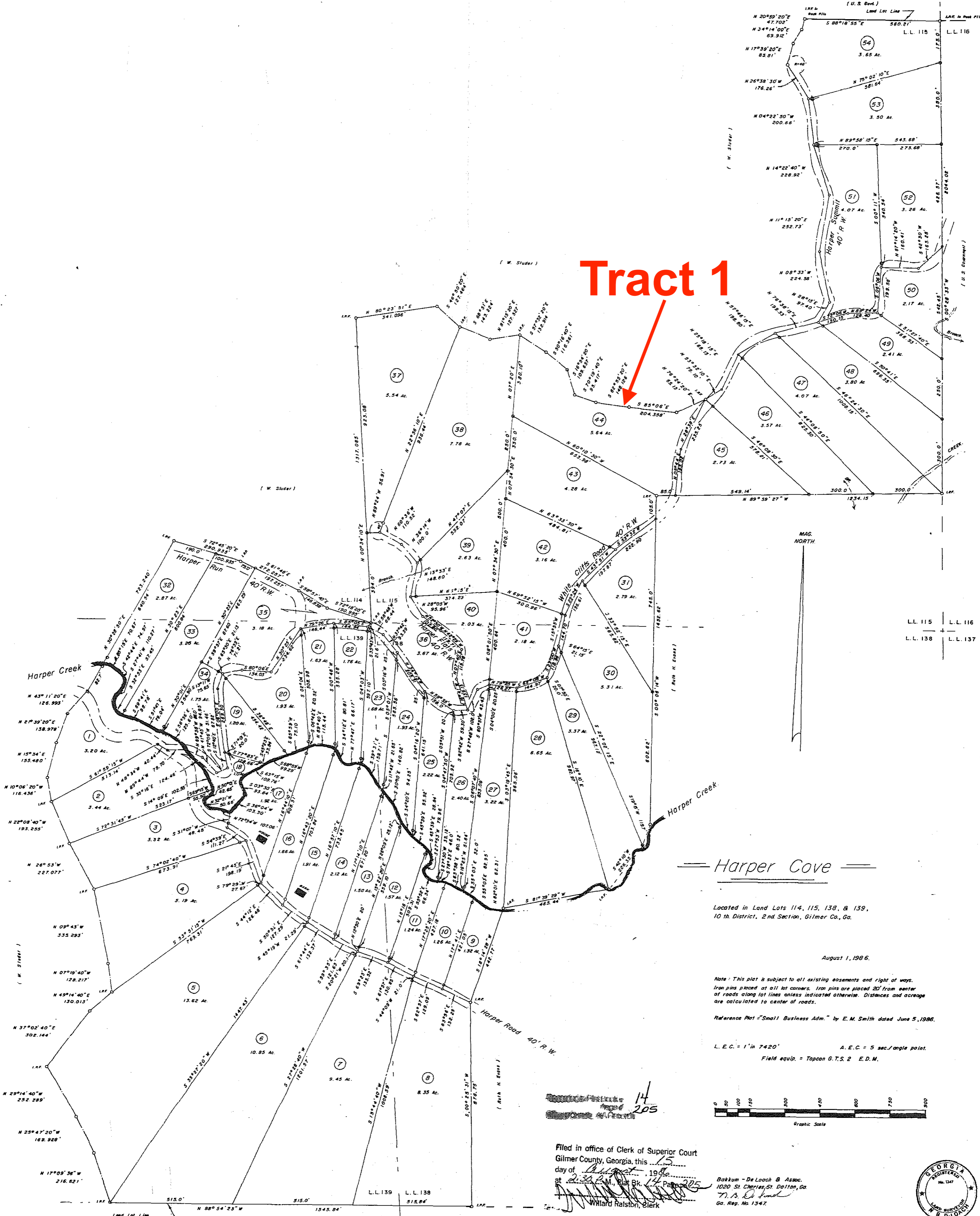


**Tract 1**



Harper Cove

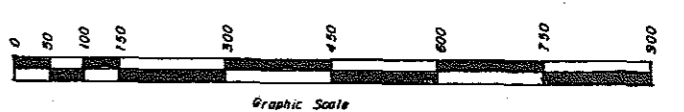
Located in Land Lots 114, 115, 138, & 139,  
10th District, 2nd Section, Gilmer Co., Ga.

August 1, 1986.

Note: This plat is subject to all existing easements and right of ways.  
Iron pins placed at all lot corners. Iron pins are placed 20' from center  
of roads along lot lines unless indicated otherwise. Distances and acreage  
are calculated to center of roads.

Reference Plat "Small Business Adm." by E.M. Smith dated June 5, 1986.

L. E. C. = 1" in 7420' A. E. C. = 5 sec./angle point.  
Field equip. = Topcon G.T.S. 2 E.D.M.



Filed in office of Clerk of Superior Court  
Gilmer County, Georgia, this 15  
day of August, 1986  
at 2:30 P.M., Plat Bk. 14 Page 205  
Willard Ralston, Clerk

Balkum - DeLoach & Assoc.  
1020 St. Charles St. Dalton, Ga.  
T. B. DeLoach  
Ga. Reg. No. 1347.

